

Hoshizaki America, Inc.

Cubelet Icemaker/Dispenser

Models

DCM-500BAH

DCM-500BWH



“A Superior Degree
of Reliability”

www.hoshizaki.com

PARTS LIST



Number: 71285
Issued: 7-8-2008
Revised: 7-20-2015

CONTENTS

| | |
|---|----|
| Auxiliary Codes..... | 3 |
| Note About Ordering Parts | 3 |
| A. Ice Dispenser Assembly | 4 |
| DCM-500BAH..... | 4 |
| DCM-500BAH..... | 5 |
| B. Refrigeration Circuit..... | 10 |
| DCM-500BAH..... | 10 |
| DCM-500BWH..... | 12 |
| C. Icemaking Unit | 14 |
| D. Water Circuit | 16 |
| E. Control Box Assembly..... | 18 |
| F. Front Panel Assembly..... | 20 |
| G. Middle Front Frame Assembly..... | 21 |
| H. Shutter Assembly..... | 22 |
| J. Gear Motor Assembly (Agitator) | 25 |
| K. Gear Motor Assembly (Dispense)..... | 26 |
| L. Bin Assembly | 27 |
| M. Bin Top Assembly..... | 28 |
| N. Accessories & Labels..... | 29 |

Auxiliary Codes

DCM-500BAH

| | |
|-----|---------------|
| T-0 | March 2008 |
| T-1 | October 2008 |
| U-0 | January 2009 |
| U-1 | August 2009 |
| V-0 | January 2010 |
| V-2 | May 2010 |
| V-3 | June 2010 |
| V-4 | July 2010 |
| V-1 | November 2010 |
| A-0 | January 2011 |
| A-1 | June 2011 |
| B-0 | January 2012 |
| C-0 | January 2013 |
| C-1 | November 2013 |
| D-0 | January 2014 |
| E-0 | January 2015 |

DCM-500BWH

| | |
|-----|----------------|
| T-0 | May 2008 |
| T-1 | October 2008 |
| U-0 | April 2009 |
| U-1 | September 2009 |
| V-0 | February 2010 |
| V-1 | April 2010 |
| V-2 | May 2010 |
| V-3 | June 2010 |
| V-4 | July 2010 |
| V-1 | November 2010 |
| A-0 | January 2011 |
| A-1 | June 2011 |
| B-0 | January 2012 |
| C-0 | January 2013 |
| C-1 | August 2013 |
| D-0 | January 2014 |
| E-0 | January 2015 |

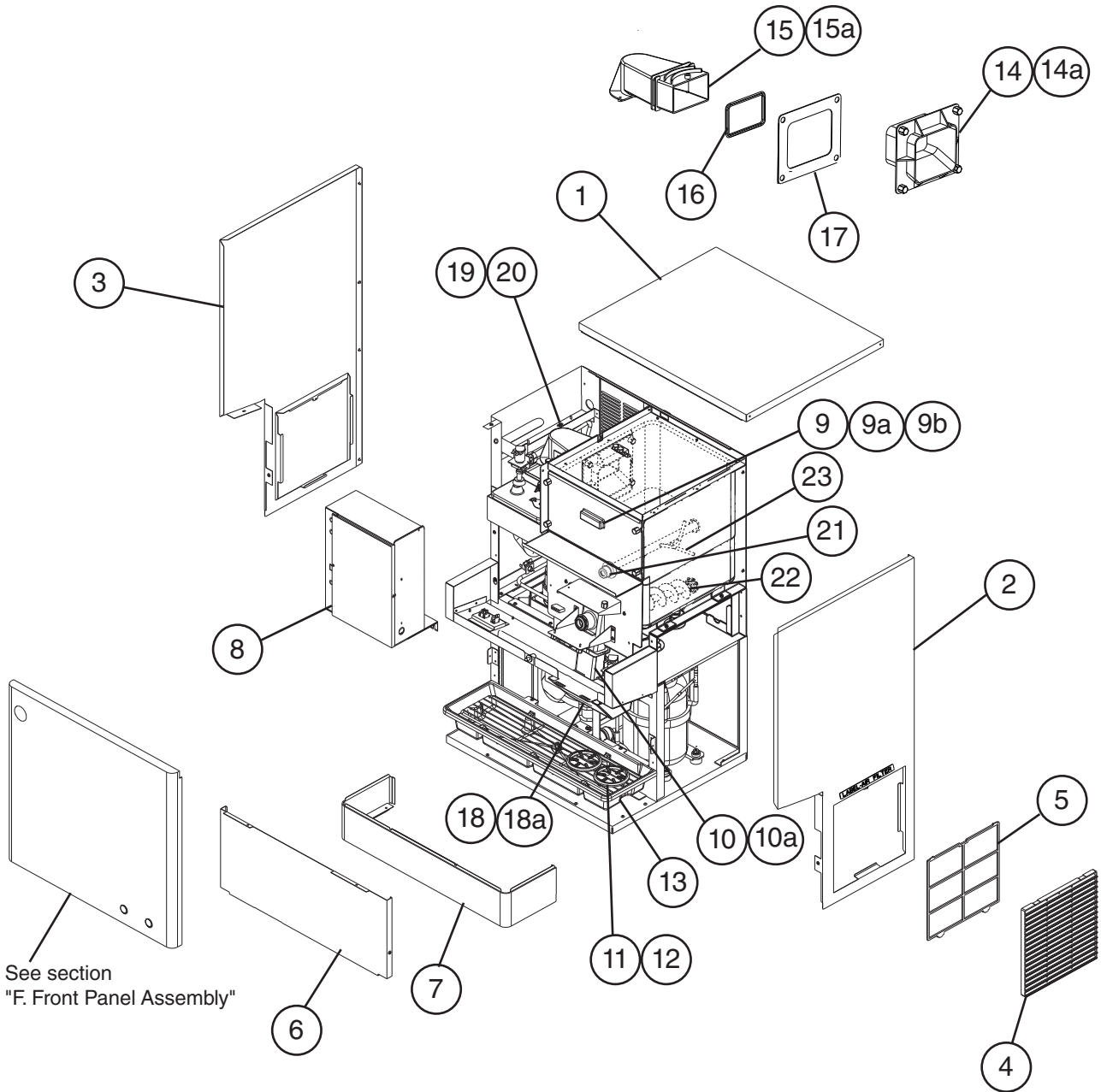
Auxiliary Code Breakdown

The auxiliary code is the first two characters in the serial number. The first character indicates the year. Years progress or regress in alphabetical order. The series runs from "A" through "V" and the letters "I" and "O" are skipped. The second character indicates significant part changes within a year. Base is "0" and this number advances for each change. In cases where there is a letter in parentheses, this designates the month. This is the last character in the serial number. The series runs from "(A)" through "(M)" and the letter "(I)" is skipped. This designation is only included when identifying a parts change within an auxiliary code.

Note About Ordering Parts

Most assemblies cannot be ordered as complete units; parts in the assemblies generally must be ordered separately.

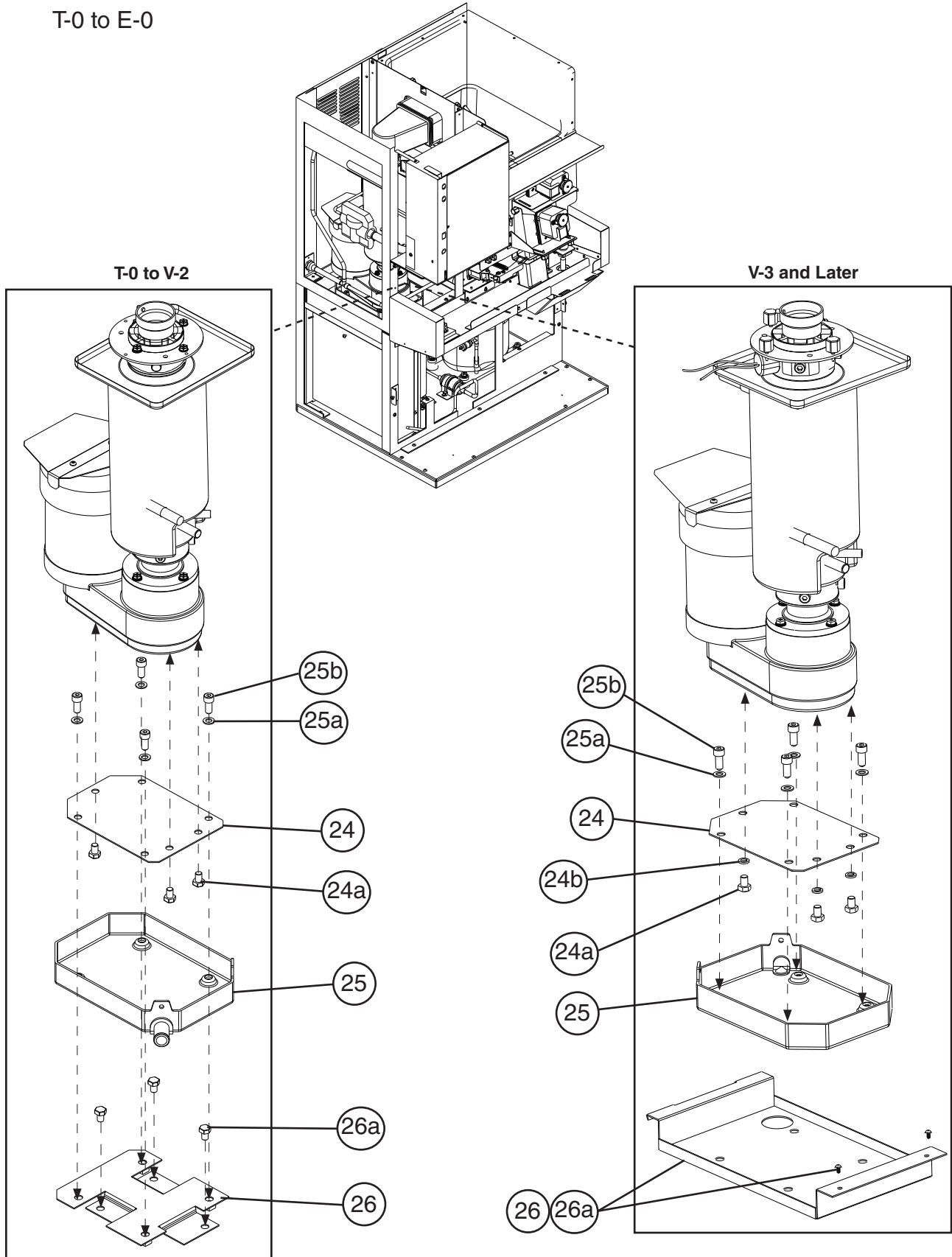
A. Ice Dispenser Assembly
DCM-500BAH
1/2
T-0 to E-0



A. Ice Dispenser Assembly DCM-500BAH

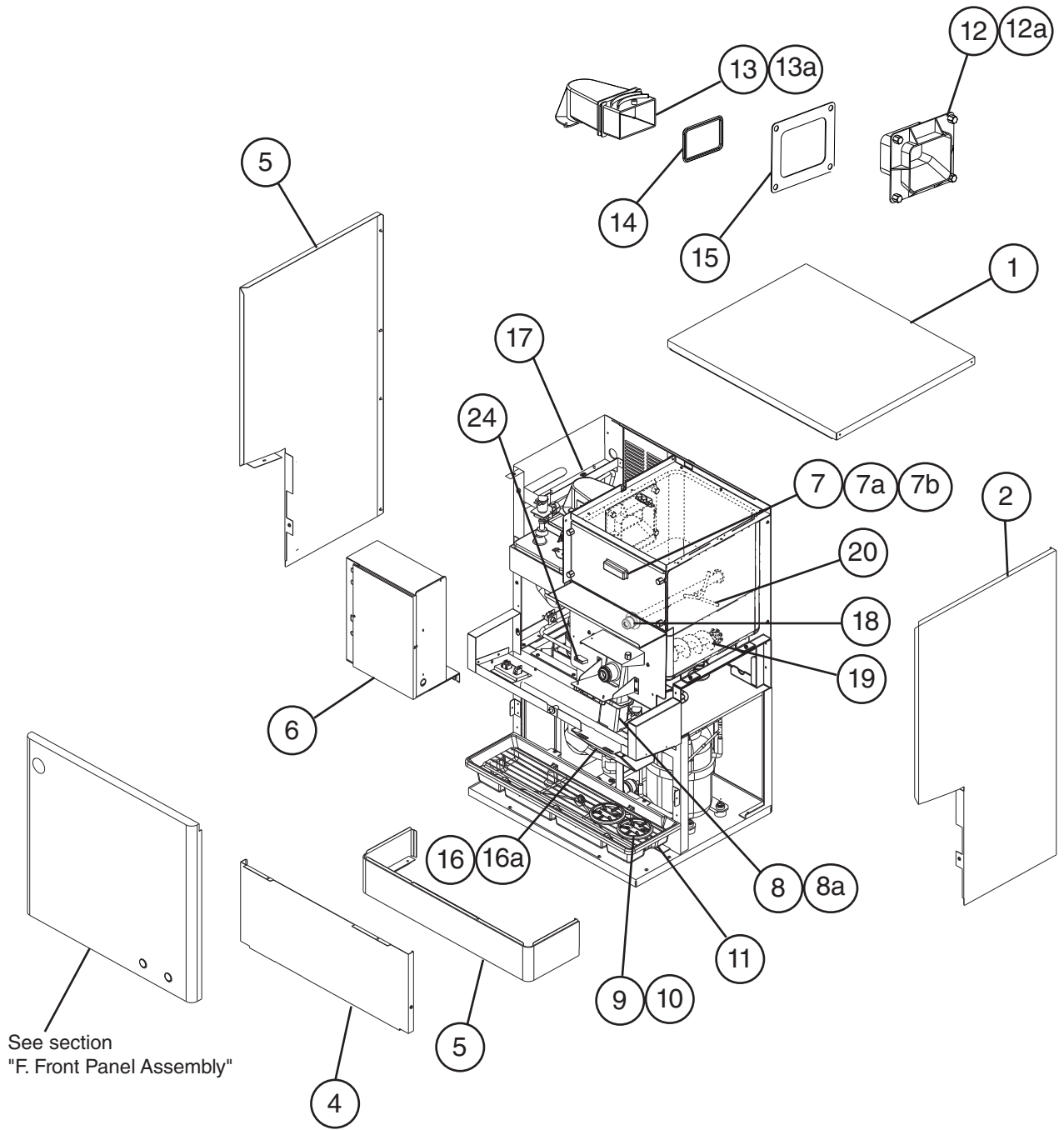
2/2

T-0 to E-0

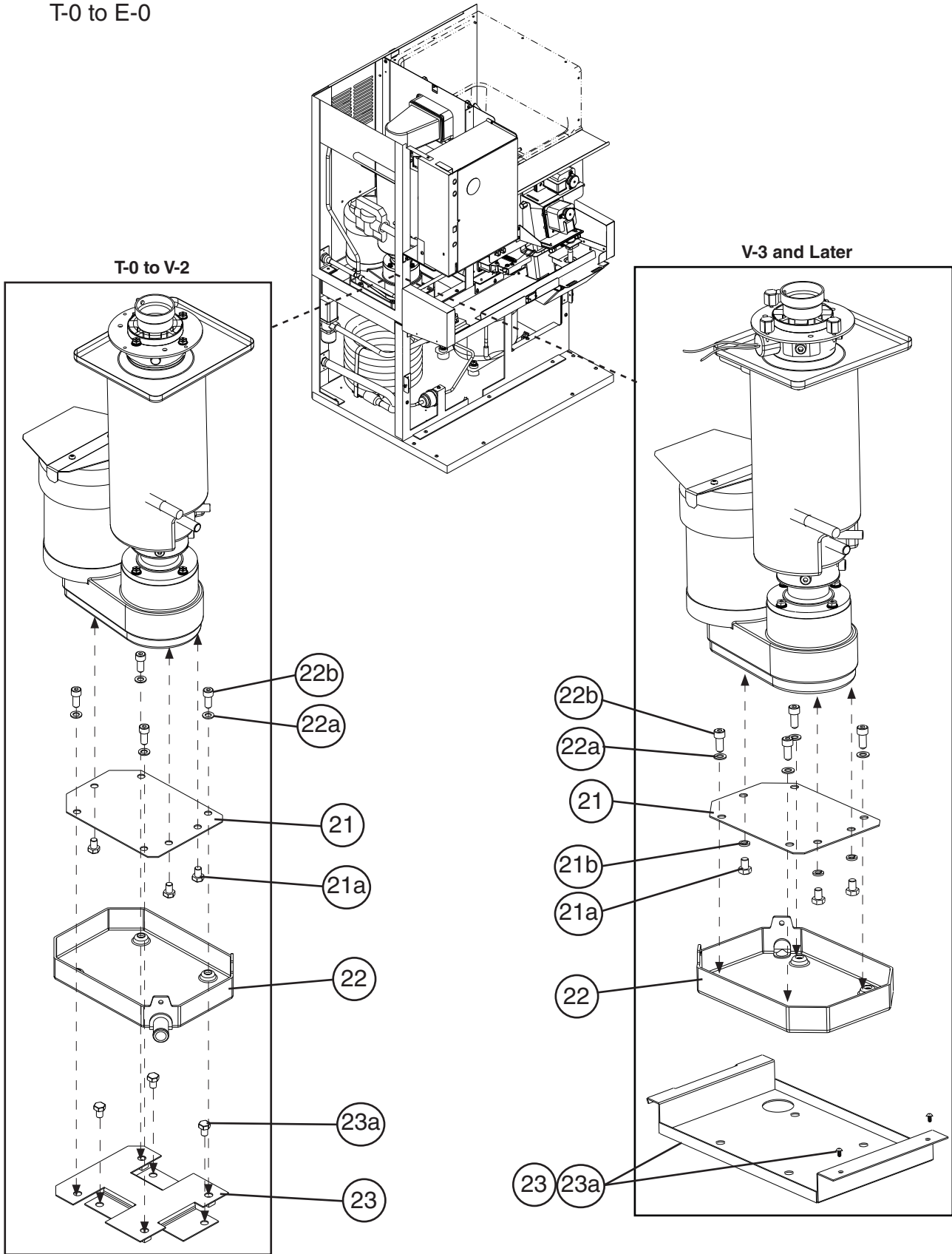


| Title: A. Ice Dispenser Assembly Model: DCM-500BAH | | | | | | | | | | | | |
|--|----------------------|--------------------------|-------------|-----------------|------------|--|--|--|--|--|--|--|
| Index No. | Description | Material or Model Number | Part Number | Required Number | | | | | | | | |
| | | | | T-0 to V-2 | V-3 to E-0 | | | | | | | |
| 1 | Top Panel | | 3A2514G01 | 1 | 1 | | | | | | | |
| 2 | Right Side Panel | | 2A2617-01 | 1 | - | | | | | | | |
| | | | 2A6143-01 | | 1 | | | | | | | |
| 3 | Left Side Panel | | 2A2616-01 | 1 | - | | | | | | | |
| | | | 2A6144-01 | | 1 | | | | | | | |
| 4 | Louver | | 103121-03 | 2 | 2 | | | | | | | |
| 5 | Air Filter | | 208283G03 | 1 | 1 | | | | | | | |
| 6 | Apron Panel | | 2A0720-01 | 1 | 1 | | | | | | | |
| 7 | Middle Panel (Lo) | | 2A0699G01 | 1 | 1 | | | | | | | |
| 8 | Control Box Cover | | 4A5054-01 | 1 | 1 | | | | | | | |
| 9 | Bin Cover | | 2A0880A02 | 1 | 1 | | | | | | | |
| 9a | Thumbscrew | | 415949G12 | 4 | 4 | | | | | | | |
| 9b | Bin Cover Gasket | | 318984G01 | 1 | 1 | | | | | | | |
| 10 | Ice Chute | | 4A2204-01 | 1 | 1 | | | | | | | |
| 10a | Thumbscrew | | 415949G08 | 2 | 2 | | | | | | | |
| 11 | Cup Guide | | 326702-01 | 2 | 2 | | | | | | | |
| 12 | Grille | | 2A0827G01 | 1 | 1 | | | | | | | |
| 13 | Drip Tray | | 2A2591G01 | 1 | 1 | | | | | | | |
| 14 | Spout B | | 208807-01 | 1 | 1 | | | | | | | |
| 14a | Thumbscrew | | 415949G11 | 4 | 4 | | | | | | | |
| 15 | Spout | | 103329G01 | 1 | 1 | | | | | | | |
| 15a | Thumbscrew | | 415949G11 | 3 | 3 | | | | | | | |
| 16 | Spout Packing A | | 427195-01 | 1 | 1 | | | | | | | |
| 17 | Spout Packing B | | 427196-01 | 1 | 1 | | | | | | | |
| 18 | Spout Cover | | 215773-01 | 1 | 1 | | | | | | | |
| 18a | Thumbscrew | | 415949G08 | 2 | 2 | | | | | | | |
| 19 | Square Washer | | 433537-02 | 1 | 1 | | | | | | | |
| 20 | Grounding Screw | | 433304-02 | 1 | 1 | | | | | | | |
| 21 | Gasket | | 429758-01 | 2 | 2 | | | | | | | |
| 22 | Auger (Dispense) | | 339192G01 | 1 | 1 | | | | | | | |
| 23 | Agitator | | 3A0895G01 | 1 | 1 | | | | | | | |
| 24 | Gear Motor Base | | 4A4308-01 | 1 | 1 | | | | | | | |
| 24a | Hex Head Bolt | 8x12 | 7B02-0812 | 3 | 3 | | | | | | | |
| 24b | Split Lock Washer | M8 | 7L22-0800 | | 3 | | | | | | | |
| 25 | Drain Pan | | 4A4354G01 | 1 | - | | | | | | | |
| | | | 4A4354G02 | | 1 | | | | | | | |
| 25a | Flat Washer | M8, SS | 7W22-0800 | 4 | 4 | | | | | | | |
| 25b | Allen Head Cap Screw | 8x20, SS | 7S12-0820 | 4 | 4 | | | | | | | |
| 26 | Drain Pan Bracket | | 4A4315G01 | 1 | - | | | | | | | |
| | | | 2A5389G01 | | 1 | | | | | | | |
| 26a | Hex Head Bolt | 8x12 | 7B02-0812 | 3 | - | | | | | | | |
| | FT Screw | 4x8 | 7F32-0408 | | 4 | | | | | | | |

A. Ice Dispenser Assembly
DCM-500BWH
1/2
 T-0 to E-0

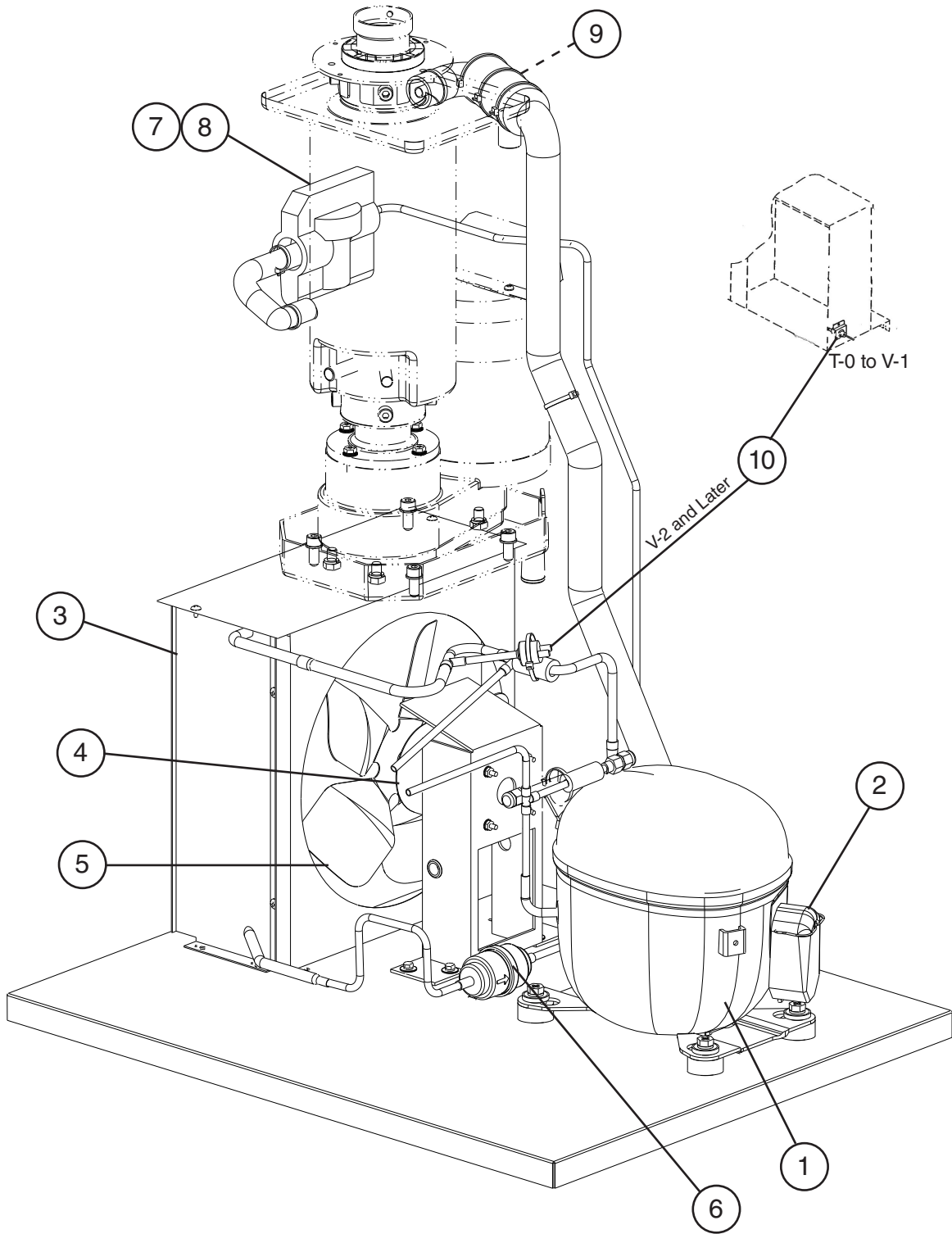


A. Ice Dispenser Assembly
DCM-500BWH
2/2
 T-0 to E-0



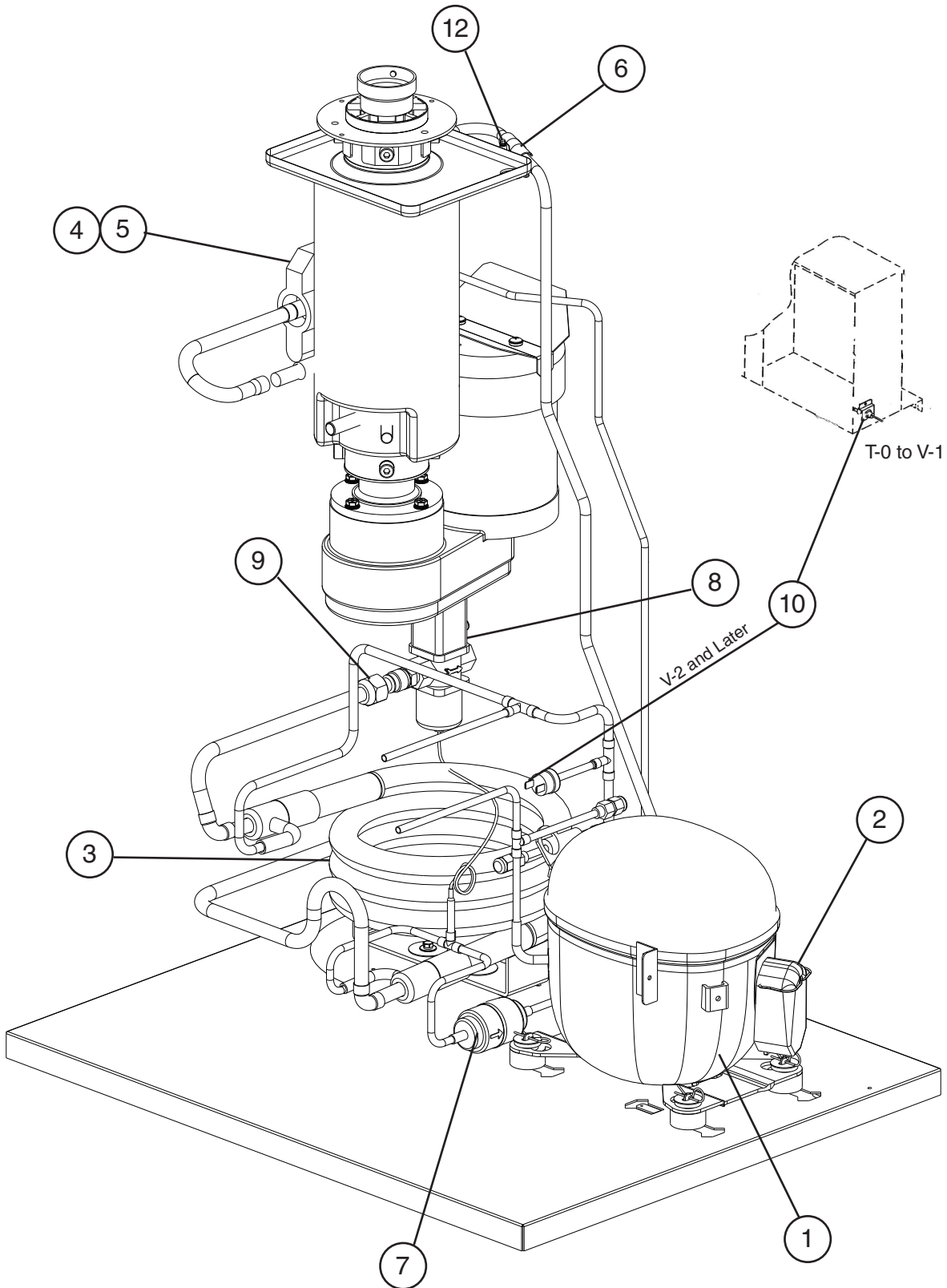
| Title: A. Ice Dispenser Assembly Model: DCM-500BWH | | | | | | | | | | | | |
|--|-------------------|--------------------------|-------------|-----------------|------------|--|--|--|--|--|--|--|
| Index No. | Description | Material or Model Number | Part Number | Required Number | | | | | | | | |
| | | | | T-0 to V-2 | V-3 to E-0 | | | | | | | |
| 1 | Top Panel | | 3A2514G01 | 1 | 1 | | | | | | | |
| 2 | Right Side Panel | | 2A2625-01 | 1 | - | | | | | | | |
| | | | 2A6141-01 | | 1 | | | | | | | |
| 3 | Left Side Panel | | 2A2624-01 | 1 | - | | | | | | | |
| | | | 2A6142-01 | | 1 | | | | | | | |
| 4 | Apron Panel | | 2A0720-01 | 1 | 1 | | | | | | | |
| 5 | Middle Panel (Lo) | | 2A0699G01 | 1 | 1 | | | | | | | |
| 6 | Control Box Cover | | 4A5054-01 | 1 | 1 | | | | | | | |
| 7 | Bin Cover | | 2A0880A02 | 1 | 1 | | | | | | | |
| 7a | Thumbscrew | | 415949G12 | 4 | 4 | | | | | | | |
| 7b | Bin Cover Gasket | | 318984G01 | 1 | 1 | | | | | | | |
| 8 | Ice Chute | | 4A2204-01 | 1 | 1 | | | | | | | |
| 8a | Thumbscrew | | 415949G08 | 2 | 2 | | | | | | | |
| 9 | Cup Guide | | 326702-01 | 2 | 2 | | | | | | | |
| 10 | Grille | | 2A0827G01 | 1 | 1 | | | | | | | |
| 11 | Drip Tray | | 2A2591G01 | 1 | 1 | | | | | | | |
| 12 | Spout B | | 208807-01 | 1 | 1 | | | | | | | |
| 12a | Thumbscrew | | 415949G11 | 4 | 4 | | | | | | | |
| 13 | Spout | | 103329G01 | 1 | 1 | | | | | | | |
| 13a | Thumbscrew | | 415949G11 | 3 | 3 | | | | | | | |
| 14 | Spout Packing A | | 427195-01 | 1 | 1 | | | | | | | |
| 15 | Spout Packing B | | 427196-01 | 1 | 1 | | | | | | | |
| 16 | Spout Cover | | 215773-01 | 1 | 1 | | | | | | | |
| 16a | Thumbscrew | | 415949G08 | 2 | 2 | | | | | | | |
| 17 | Grounding Screw | | 433304-02 | 1 | 1 | | | | | | | |
| 18 | Gasket | | 429758-01 | 2 | 2 | | | | | | | |
| 19 | Auger (Dispense) | | 339192G01 | 1 | 1 | | | | | | | |
| 20 | Agitator | | 3A0895G01 | 1 | 1 | | | | | | | |
| 21 | Gear Motor Base | | 4A4308-01 | 1 | 1 | | | | | | | |
| 21a | Hex Head Bolt | 8x12 | 7B02-0812 | 3 | 3 | | | | | | | |
| 21b | Split Lock Washer | M8 | 7L22-0800 | | 3 | | | | | | | |
| 22 | Drain Pan | | 4A4354G01 | 1 | - | | | | | | | |
| | | | 4A4354G02 | | 1 | | | | | | | |
| 23 | Drain Pan Bracket | | 4A4315G01 | 1 | - | | | | | | | |
| | | | 2A5389G01 | | 1 | | | | | | | |
| 23a | Hex Head Bolt | 8x12 | 7B02-0812 | 3 | - | | | | | | | |
| | FT Screw | 4x8 | 7F32-0408 | | 4 | | | | | | | |

B. Refrigeration Circuit
DCM-500BAH
T-0 to E-0



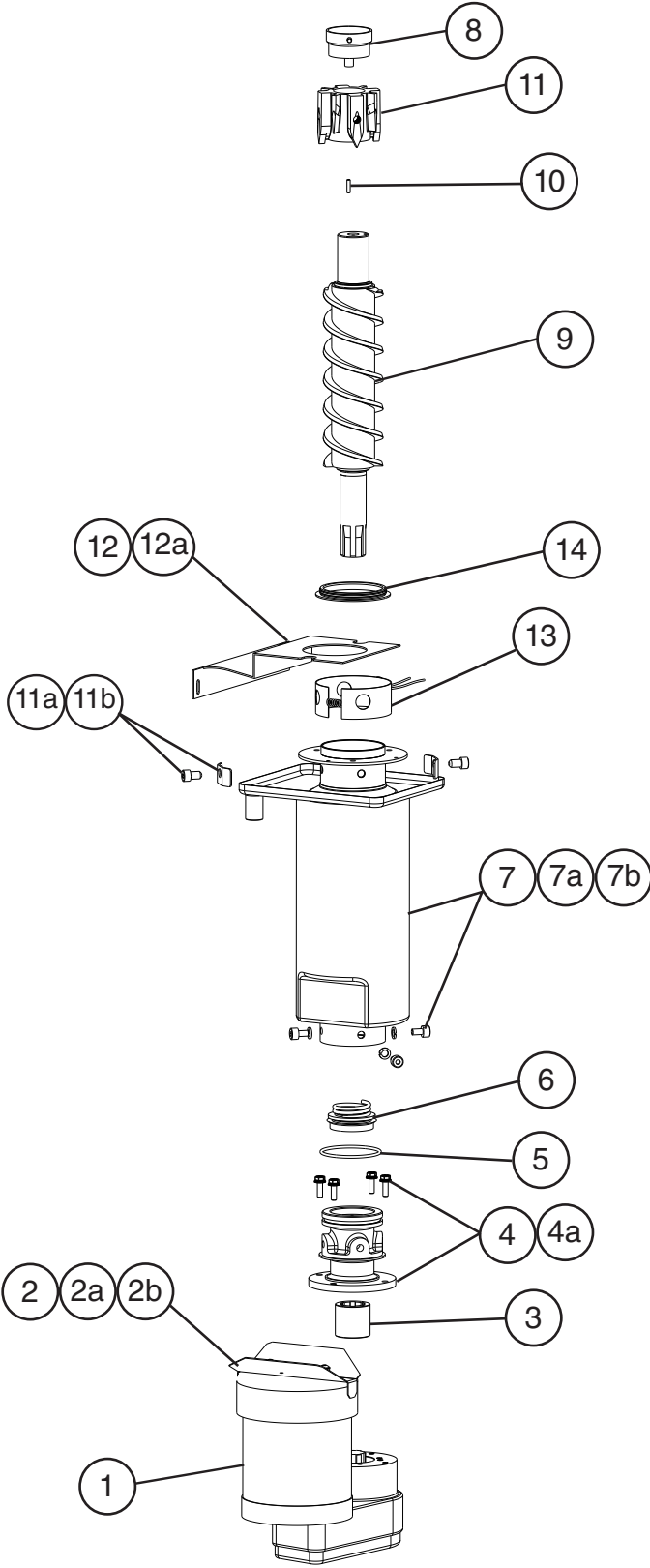
| Title: B. Refrigeration Circuit Model: DCM-500BAH | | | | | | | | | | | |
|---|-------------------------------------|--------------------------|-------------|-----------------|------------|--|--|--|--|--|--|
| Index No. | Description | Material or Model Number | Part Number | Required Number | | | | | | | |
| | | | | T-0 to V-1 | V-2 to E-0 | | | | | | |
| 1 | Compressor | RS43C2E-CAA | 4A2300-01 | 1 | - | | | | | | |
| | | RST45C1E-CAA | 4A4479-01 | | 1 | | | | | | |
| 2 | Compressor Protector | | 4A1805-01 | 1 | - | | | | | | |
| | | | 4A4481-01 | | 1 | | | | | | |
| 3 | Condenser | | 210104-02 | 1 | 1 | | | | | | |
| 4 | Fan Motor | | 4A3158-01 | 1 | 1 | | | | | | |
| 5 | Fan Blade | | 444898-01 | 1 | 1 | | | | | | |
| 6 | Drier | | 4A1113-01 | 1 | 1 | | | | | | |
| 7 | Thermostatic Expansion Valve | | 4A1117-01 | 1 | 1 | | | | | | |
| 8 | Thermostatic Expansion Valve Cover | | 4A1168-01 | 1 | 1 | | | | | | |
| 9 | Thermostatic Expansion Valve Holder | | 3A0107-01 | 1 | 1 | | | | | | |
| 10 | High-Pressure Switch | | 433441-07 | 1 | - | | | | | | |
| | | | 463180-04 | | 1 | | | | | | |

B. Refrigeration Circuit
DCM-500BWH
T-0 to E-0



| Title: B. Refrigeration Circuit Model: DCM-500BWH | | | | | | | | | | | |
|--|-------------------------------------|--------------------------|-------------|-----------------|------------|------------|--|--|--|--|--|
| Index No. | Description | Material or Model Number | Part Number | Required Number | | | | | | | |
| | | | | T-0 to V-0 | V-1 to C-0 | C-1 to E-0 | | | | | |
| 1 | Compressor | RS43C2E-CAA | 4A2300-01 | 1 | - | | | | | | |
| | | RST45C1E-CAA | 4A4479-01 | | 1 | 1 | | | | | |
| 2 | Compressor Protector | | 4A1805-01 | 1 | - | | | | | | |
| | | | 4A4481-01 | | 1 | 1 | | | | | |
| 3 | Condenser | HS-5098 | 2A2359G02 | 1 | 1 | - | | | | | |
| | | | 3A7321-01 | | | 1 | | | | | |
| 4 | Thermostatic Expansion Valve | | 4A1117-01 | 1 | 1 | 1 | | | | | |
| 5 | Thermostatic Expansion Valve Cover | | 4A1168-01 | 1 | 1 | 1 | | | | | |
| 6 | Thermostatic Expansion Valve Holder | | 3A0107-01 | 1 | 1 | 1 | | | | | |
| 7 | Drier | | 4A1113-01 | 1 | 1 | 1 | | | | | |
| 8 | Water Regulating Valve | | 4A0911-04 | 1 | 1 | 1 | | | | | |
| 9 | Male Connector | | 4A1087-01 | 1 | 1 | 1 | | | | | |
| 10 | High-Pressure Switch | | 433441-05 | 1 | - | | | | | | |
| | | | 463180-05 | | 1 | 1 | | | | | |

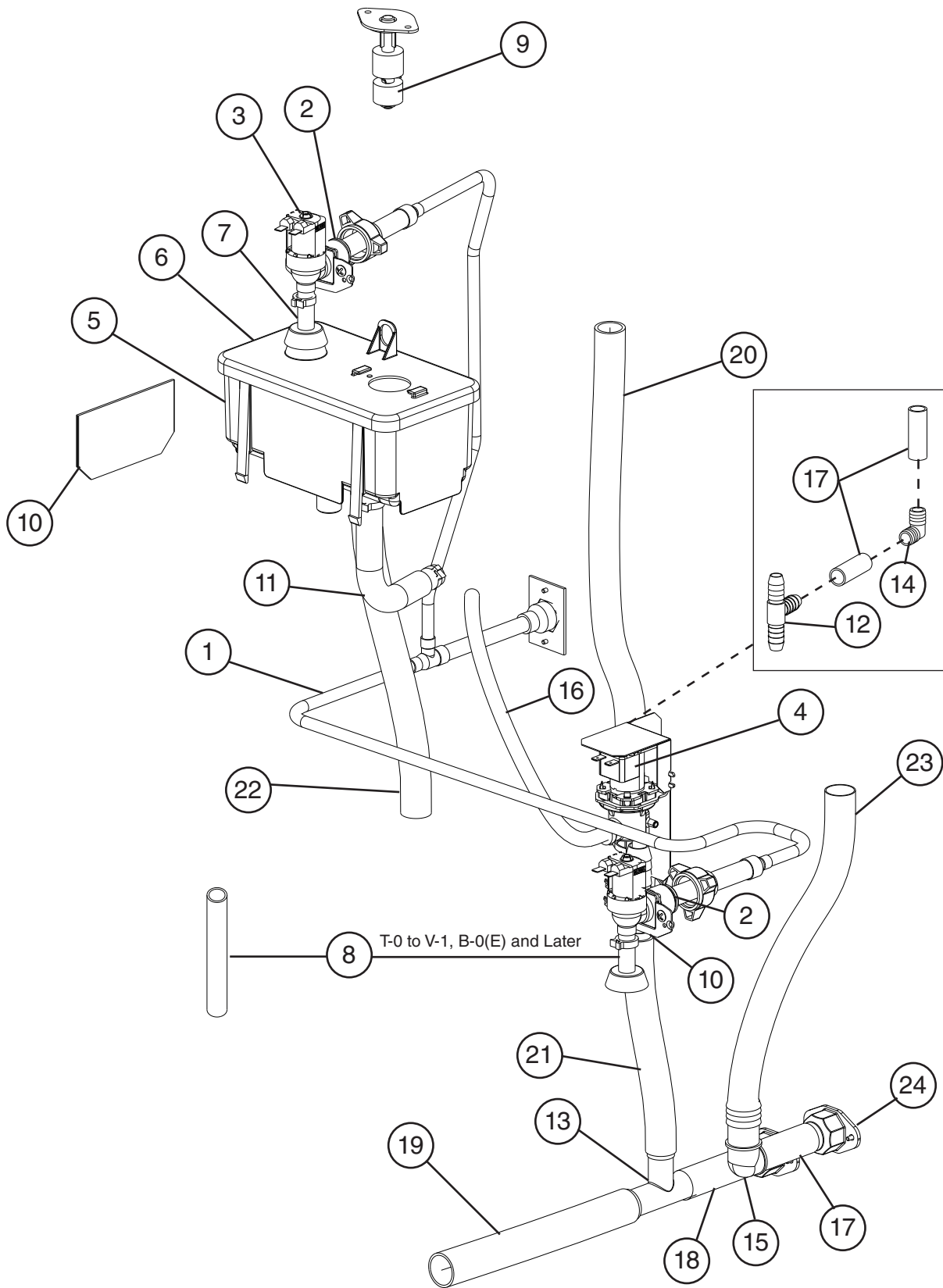
C. Icemaking Unit
DCM-500B_H
T-0 to E-0



Title: C. Icemaking Unit Model: DCM-500B_H

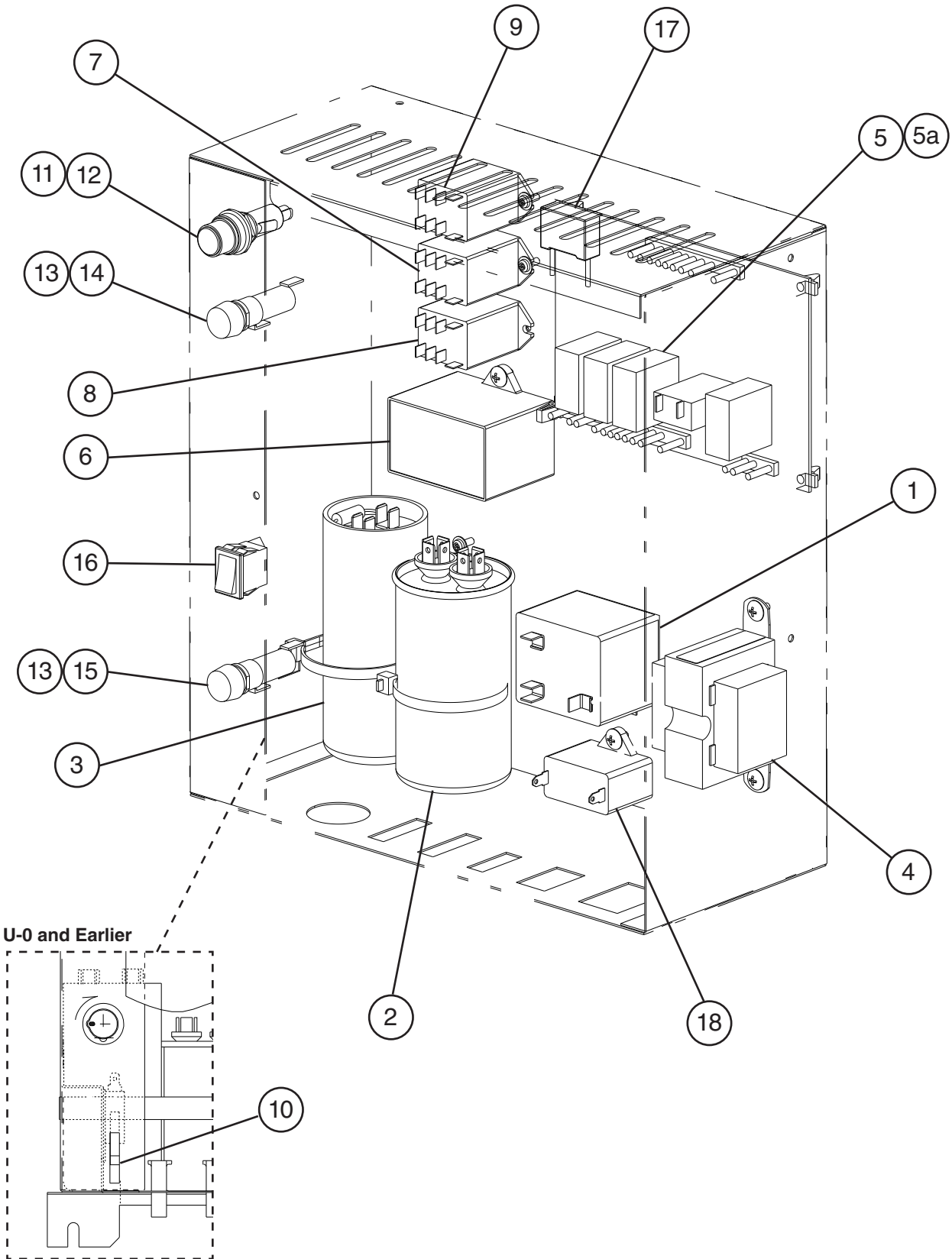
| Index No. | Description | Material or Model Number | Part Number | T-0 to E-0 | Required Number | | | | | | | | |
|-----------|------------------------|--------------------------|-------------|------------|-----------------|--|--|--|--|--|--|--|--|
| | | | | | | | | | | | | | |
| 1 | Gear Motor | | 4A4320-01 | 1 | | | | | | | | | |
| 2 | Gear Motor Cover | | 3A4584-01 | 1 | | | | | | | | | |
| 2a | Truss Head Screw | | 7C32-0508 | 2 | | | | | | | | | |
| 2b | Rubber Seal Washer | | 4A5268-02 | 2 | | | | | | | | | |
| 3 | Spline Coupling | | 4A3204-01 | 1 | | | | | | | | | |
| 4 | Housing | | 2A0947G01 | 1 | | | | | | | | | |
| 4a | Bolt | | 4A1989-01 | 4 | | | | | | | | | |
| 5 | O-Ring | | 4A4755-02 | 1 | | | | | | | | | |
| 6 | Mechanical Seal | | 432492-01 | 1 | | | | | | | | | |
| 7 | Evaporator | | 2A3314G01 | 1 | | | | | | | | | |
| 7a | Split Lock Washer | M8, SS | 7L22-0800 | 4 | | | | | | | | | |
| 7b | Allen Head Cap Screw | 8x12, SS | 7S12-0812 | 4 | | | | | | | | | |
| 8 | Cutter | | 427183G01 | 1 | | | | | | | | | |
| 9 | Auger | | 120863G02 | 1 | | | | | | | | | |
| 10 | Dowel Pin | | 713S-0416 | 1 | | | | | | | | | |
| 11 | Extruding Head | | 216530G04 | 1 | | | | | | | | | |
| 11a | Washer | | 427184-01 | 1 | | | | | | | | | |
| 11b | Seal Bolt | | P01768-01 | 4 | | | | | | | | | |
| 12 | Evaporator Bracket | | 3A0360-01 | 1 | | | | | | | | | |
| 12a | Hex Jead Bolt w/Washer | 5x10, SS | 7B0230510 | 2 | | | | | | | | | |
| 13 | Evaporator Heater | | 4A2292-01 | 1 | | | | | | | | | |
| 14 | Packing | | 427151-02 | 1 | | | | | | | | | |

D. Water Circuit
DCM-500B_H
T-0 to E-0



| Title: D. Water Circuit Model: DCM-500B_H | | | | | | | | | | | | | |
|---|-------------------------------------|--------------------------|-------------|-----------------|------------|----------------|----------------|-----|---|--|--|--|--|
| Index No. | Description | Material or Model Number | Part Number | Required Number | | | | | | | | | |
| | | | | T-0 to V-2 | V-3 to V-1 | A-0 to B-0 (D) | B-0 (E) to D-0 | E-0 | | | | | |
| 1 | Water Supply Pipe | | 2A0680G01 | 1 | 1 | 1 | 1 | - | | | | | |
| | | | 2A7569G01 | | | | | 1 | | | | | |
| 2 | Washer | | 4A0867-01 | 2 | 2 | 2 | 2 | - | | | | | |
| | Rubber Gasket | | 413854-03 | | | | | 2 | | | | | |
| 3 | Water Valve (Inlet and Dispense) | | 4A0865-01 | 2 | 2 | 2 | 2 | - | | | | | |
| | | | 4A5309-01 | | | | | 2 | | | | | |
| 4 | Drain Water Valve | | 4A2772-01 | 1 | 1 | 1 | 1 | 1 | | | | | |
| 5 | Reservoir | | 2A0753-01 | 1 | 1 | 1 | 1 | 1 | | | | | |
| 6 | Reservoir Cover | | 214810-01 | 1 | 1 | 1 | 1 | 1 | | | | | |
| 7 | Reservoir Inlet (inlet water valve) | | 4A0869-01 | 2 | 1 | 1 | 1 | 1 | | | | | |
| 8 | Reservoir Inlet (drain valve) | | 4A0869-01 | 1 | 1 | - | 1 | 1 | | | | | |
| | Vinyl Hose | L=75 mm | 7725-0912 | | | 1 | - | | | | | | |
| 9 | Float Switch | | 435490-01 | 1 | 1 | 1 | 1 | 1 | | | | | |
| 10 | Reservoir Separator | | 4A1255-01 | 1 | 1 | 1 | 1 | 1 | | | | | |
| 11 | Reservoir Hose | | 4A1165-02 | 1 | 1 | 1 | 1 | 1 | | | | | |
| 12 | Tee | | 4A3615-01 | 1 | 1 | - | | | | | | | |
| 13 | Tee | | 4A0525-04 | 1 | 1 | 1 | 1 | 1 | | | | | |
| 14 | Elbow | | 4A1017-01 | 1 | 1 | 1 | 1 | 1 | | | | | |
| 15 | Elbow | | 4A1017-01 | 1 | 1 | 1 | 1 | 1 | | | | | |
| 16 | Silicone Hose | L=310 mm | 773013896 | 1 | - | | | | | | | | |
| | | L=300 mm | | | 1 | 1 | 1 | 1 | | | | | |
| 17 | Vinyl Hose | L=70 mm | 7716-2025 | 2 | - | | | | | | | | |
| | | L=60 mm | | | 3 | 3 | 3 | 3 | | | | | |
| 18 | Vinyl Hose | L=100 mm | 7716-2025 | | 1 | 1 | 1 | 1 | | | | | |
| 19 | Vinyl Hose | L=320 mm | 7725-1923 | 1 | - | | | | | | | | |
| | | L=225 mm | | | 1 | - | | | | | | | |
| | | L=290 mm | | | | | 1 | 1 | 1 | | | | |
| 20 | Vinyl Hose | L=400 mm | 4A0658L01 | | | 1 | 1 | 1 | | | | | |
| 21 | Vinyl Hose | L=225 mm | 7755-1923 | | | 1 | 1 | 1 | | | | | |
| 22 | Vinyl Hose | L=250 mm | 4A0658L01 | 1 | - | | | | | | | | |
| | | L=225 mm | | | 1 | 1 | 1 | 1 | | | | | |
| 23 | Vinyl Hose | L=430 mm | 7725-1923 | | | 1 | 1 | 1 | | | | | |
| 24 | Drain Fitting | | 4A0776G01 | 2 | 2 | 2 | 2 | - | | | | | |
| | | | 4A5527-01 | | | | | 2 | | | | | |
| Hose Clamp | | | | | | | | | | | | | |
| | Hose Clamp | 21-26 mm | 4A2017-01 | 10 | - | | | | | | | | |
| | Hose Clamp | 26-30 mm | 4A2017-02 | 2 | - | | | | | | | | |
| | Hose Clamp | 31-36 mm | 4A2017-03 | 4 | - | | | | | | | | |
| | Hose Clamp | 17-20 mm | 4A2017-05 | 1 | 1 | 1 | 1 | 1 | | | | | |
| | Hose Clamp | 19-22 mm | 4A2017-06 | 1 | - | | | | | | | | |
| | Hose Clamp | 13-15 mm | 4A2017-08 | 4 | 3 | 3 | 3 | 3 | | | | | |

E. Control Box Assembly
DCM-500B_H
T-0 to E-0

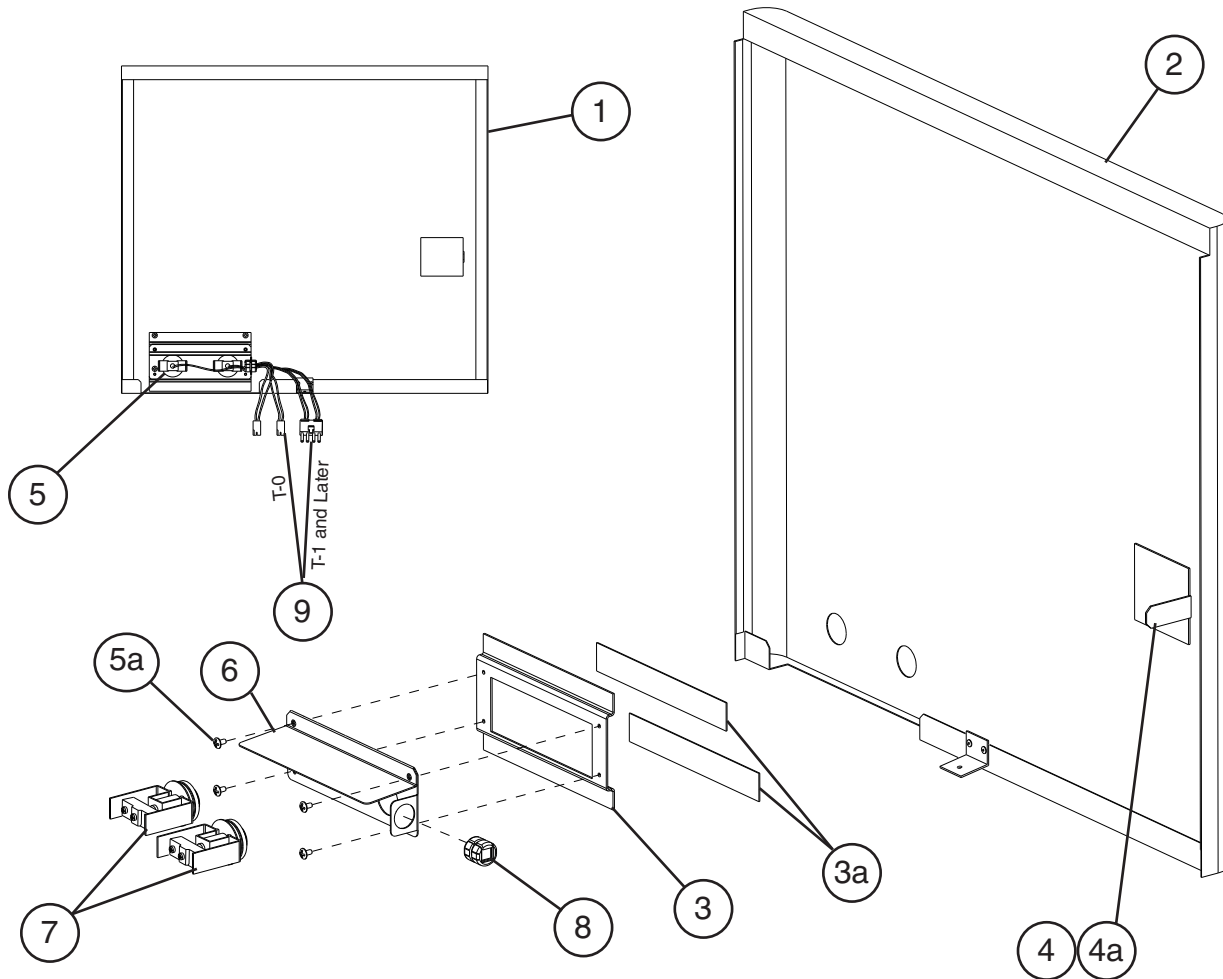


| Title: E. Control Box Assembly Model: DCM-500B_H | | | | | | | | | | | | | | | | | | |
|--|-------------------------------|-----------------------------------|-------------|-----------------|---------|-----------------|-------------------|----------------|------------|--|--|--|--|--|--|--|--|--|
| Index No. | Description | Material or Model Number | Part Number | Required Number | | | | | | | | | | | | | | |
| | | | | T-0 to U-0 | U-1 V-0 | V-1 (D) V-2 (E) | V-3 (F) V-4 (G-K) | V-1 (L) to A-1 | B-0 to E-0 | | | | | | | | | |
| 1 | Start Relay | | 4A1107-11 | 1 | 1 | 1 | 1 | 1 | 1 | | | | | | | | | |
| 2 | Run Capacitor | 15MFD, 370VAC | 3A2005-08 | 1 | 1 | - | | | | | | | | | | | | |
| | | 35MFD, 440VAC | 3A2005-12 | | | 1 | 1 | 1 | 1 | | | | | | | | | |
| 3 | Start Capacitor | 243-292MFD, 115VAC | 3A0076-10 | 1 | 1 | - | | | | | | | | | | | | |
| | | 243-292MFD, 165VAC | 3A0076-20 | | | 1 | 1 | 1 | 1 | | | | | | | | | |
| 4 | Control Transformer | | 2U0042-02 | 1 | 1 | 1 | - | | | | | | | | | | | |
| | | | 3A6652-01 | | | | 1 | 1 | 1 | | | | | | | | | |
| 5 | Control Board | | 2A1592-01 | 1 | 1 | 1 | 1 | 1 | 1 | | | | | | | | | |
| 5a | Control Board Support | | 4A0336-03 | 4 | 4 | 4 | 4 | 4 | 4 | | | | | | | | | |
| 6 | Gear Motor Capacitor | 20MFD, 350VAC | 4A4319-01 | 1 | 1 | 1 | 1 | 1 | 1 | | | | | | | | | |
| 7 | Gear Motor Relay | 120VAC | 406132-07 | 1 | 1 | 1 | 1 | 1 | 1 | | | | | | | | | |
| 8 | Power Protect Relay | 220/240VAC | 418271-05 | 1 | 1 | 1 | 1 | 1 | 1 | | | | | | | | | |
| 9 | Water Control Relay | 24VAC | 406132-03 | 1 | 1 | 1 | 1 | 1 | 1 | | | | | | | | | |
| 10 | Microswitch | | 4A2546-01 | 1 | - | | | | | | | | | | | | | |
| 11 | Fuse Holder | | 4A0892-01 | 1 | 1 | 1 | - | | | | | | | | | | | |
| | | | 4A5443-01 | | | | 1 | 1 | 1 | | | | | | | | | |
| 12 | Fuse | AGC-1A, 250VAC | 4A0893-01 | 1 | 1 | 1 | 1 | 1 | 1 | | | | | | | | | |
| 13 | Fuse Holder | | 4A3449-02 | 2 | 2 | 2 | 2 | 2 | 2 | | | | | | | | | |
| 14 | Fuse | GMC-500mA, 250VAC | 4A0893-02 | 1 | 1 | 1 | 1 | 1 | 1 | | | | | | | | | |
| 15 | Fuse | GMD 2.0A, 250VAC | 4A0893-05 | 1 | 1 | 1 | 1 | 1 | 1 | | | | | | | | | |
| 16 | Rocker Switch(Power) | | 4A0558-01 | 1 | 1 | 1 | 1 | 1 | 1 | | | | | | | | | |
| 17 | R-C Capacitor (Noise Reducer) | | 4A1012-01 | 1 | 1 | 1 | - | | | | | | | | | | | |
| | | | 4A4472-01 | | | | 1 | 1 | 1 | | | | | | | | | |
| 18 | Fan Motor Capacitor | DCM-500BAH 5MFD, 250VAC | 443192-02 | 1 | 1 | 1 | 1 | 1 | 1 | | | | | | | | | |

F. Front Panel Assembly

DCM-500B_H

T-0 to E-0

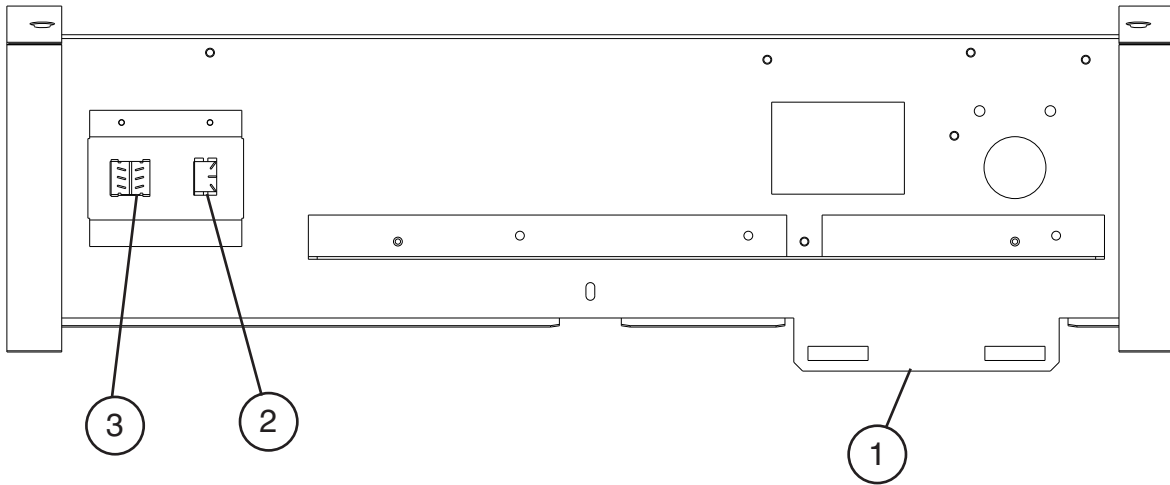


| Title: F. Front Panel Assembly Model: DCM-500B_H | | | | Required Number | | | | | | | | |
|--|---|--------------------------|-------------|-----------------|---------|------------|--|--|--|--|--|--|
| Index No. | Description | Material or Model Number | Part Number | T-0 | T-1 U-0 | U-1 to E-0 | | | | | | |
| 1 | Front Panel Assembly (B) (includes items 2 through 5a) | | 3A4998G01 | 1 | 1 | - | | | | | | |
| | | | 3A4998G02 | | | 1 | | | | | | |
| 2 | Front Panel | | 2A2891-02 | 1 | 1 | 1 | | | | | | |
| 3 | Switch Bracket | | 3A4547-01 | 1 | 1 | 1 | | | | | | |
| 3a | Foam Tape | L=185 | 4A2460L01 | 2 | 2 | 2 | | | | | | |
| 4 | Hook | | 4A3190-01 | 1 | 1 | - | | | | | | |
| 4a | Two Sided Tape | L=65 | 4A0415L01 | 3 | 1 | - | | | | | | |
| 5 | Push Switch Assembly (includes items 7 through 9) | | 3A4997A01 | 1 | 1 | 1 | | | | | | |
| 5a | Truss Head Screw | 4x8, SS | 7C32-0408 | 4 | 4 | 4 | | | | | | |
| 6 | Switch Bracket (B) | | 4A4583-01 | 1 | 1 | 1 | | | | | | |
| 7 | Push Switch | | 435745-02 | 2 | 2 | 2 | | | | | | |
| 8 | Bushing | | 420472-05 | 1 | 1 | 1 | | | | | | |
| 9 | Receptacle Housing | | 4A4003-01 | 2 | - | | | | | | | |
| | | | 412831-05 | | 1 | 1 | | | | | | |

G. Middle Front Frame Assembly

DCM-500B_H

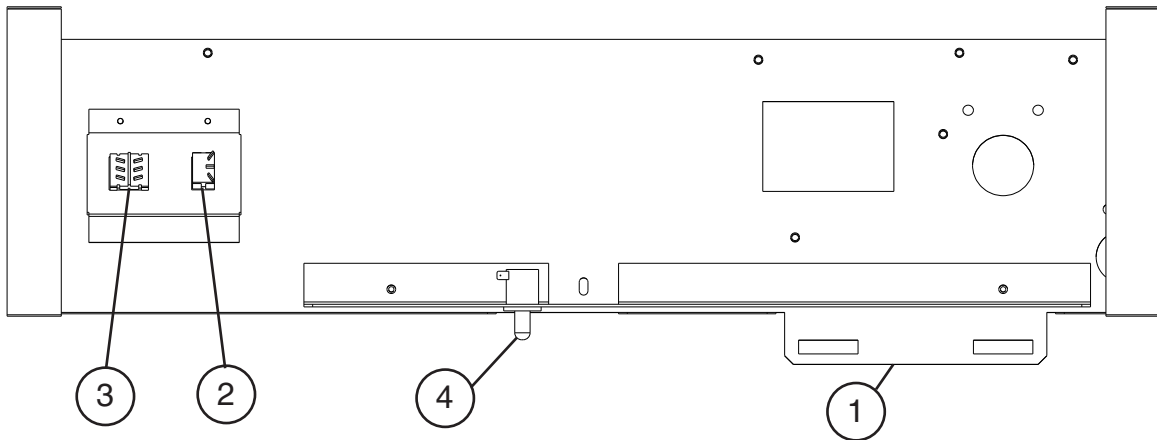
T-0(C) to U-0



G. Middle Front Frame Assembly

DCM-500B_H

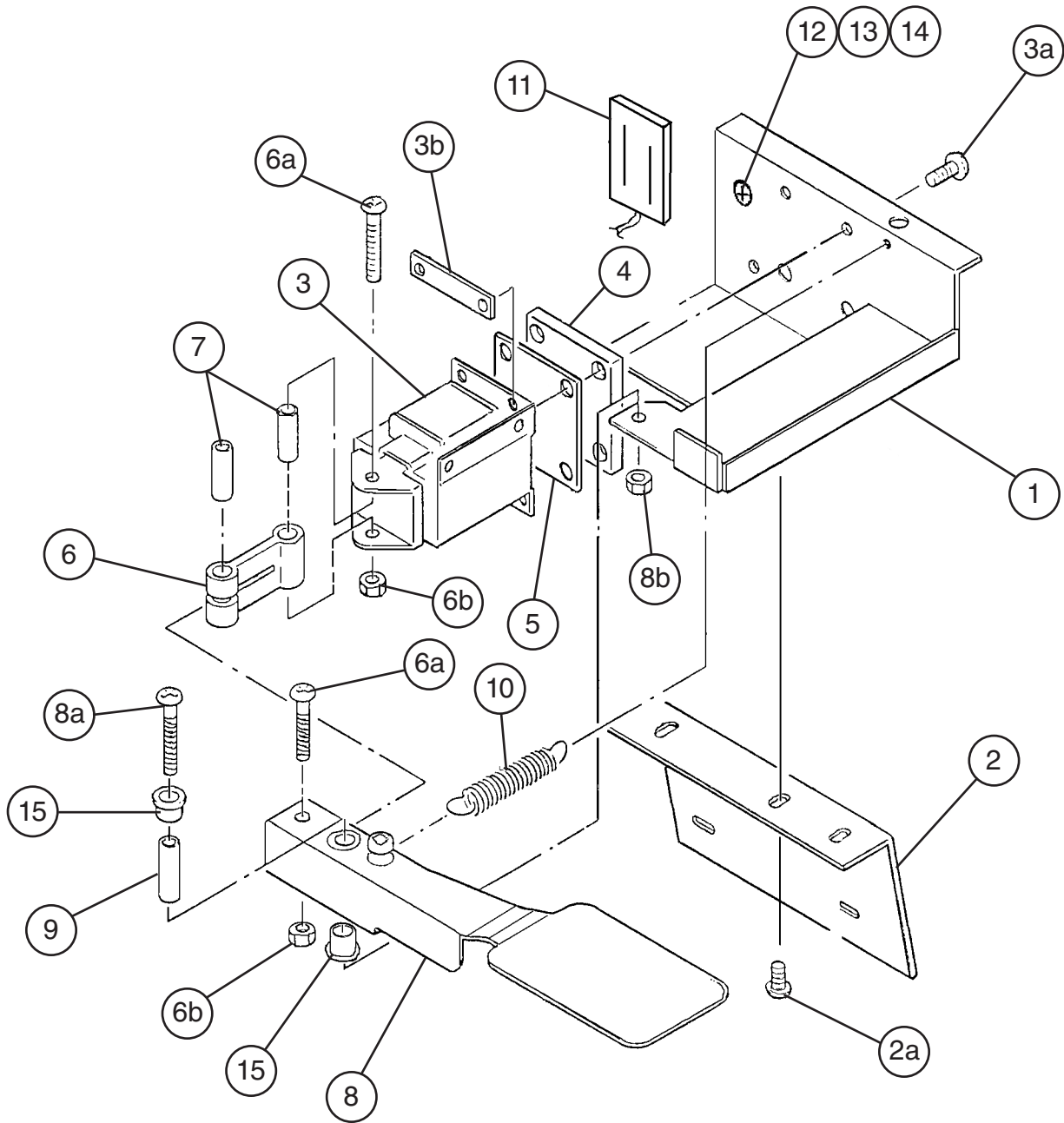
U-1 to E-0



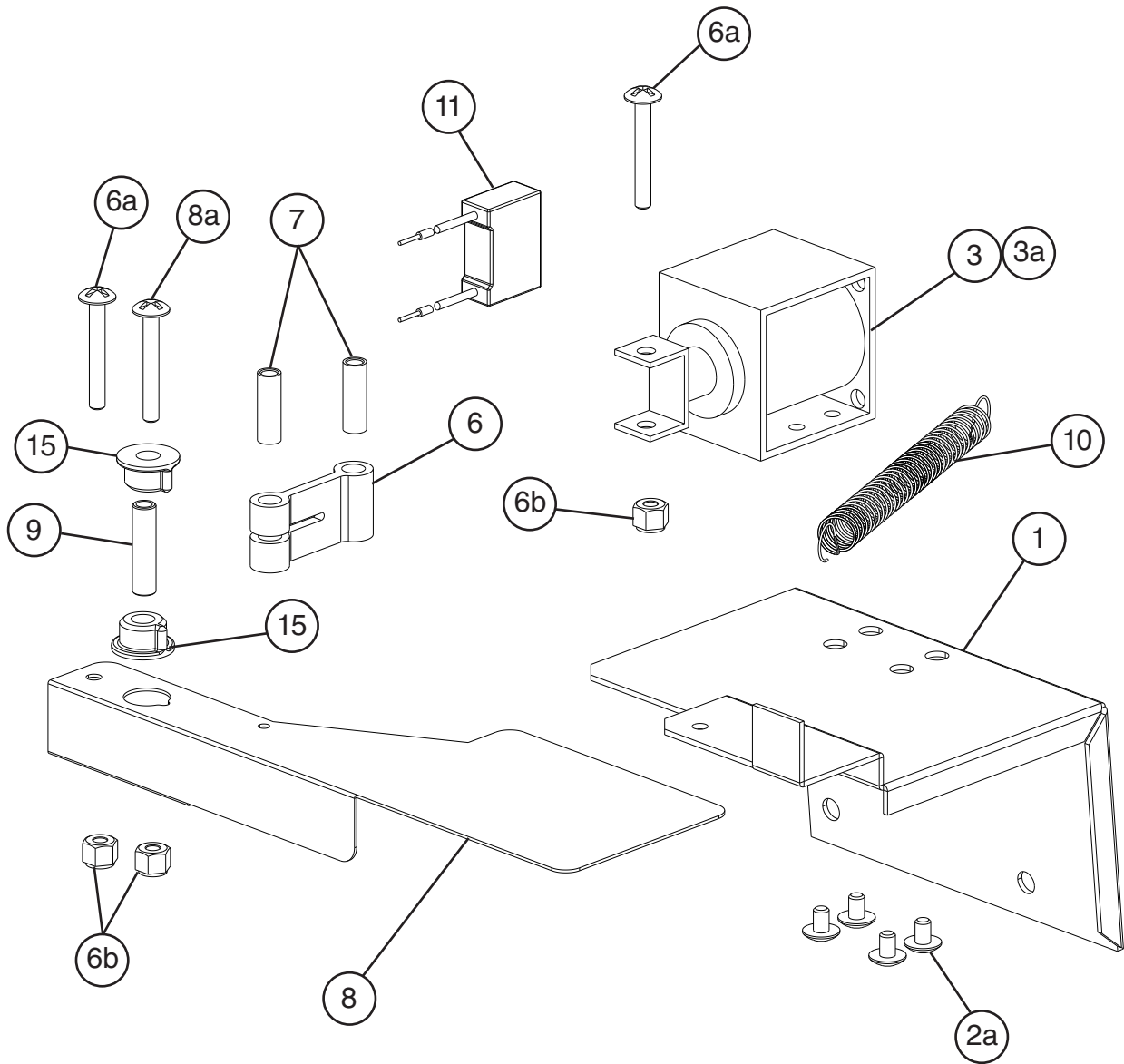
Title: G. Middle Front Frame Assembly Model: DCM-500B_H

| Index No. | Description | Material or Model Number | Part Number | Required Number | | | | | | | | |
|-----------|--------------------|--------------------------|-------------|-----------------|----------------|------------|--|--|--|--|--|--|
| | | | | T-0 (C) | T-0 (E) to U-0 | U-1 to E-0 | | | | | | |
| 1 | Middle Front Frame | | 2A2609G01 | 1 | - | | | | | | | |
| | | | 2A4748G01 | | 1 | 1 | | | | | | |
| 2 | Dispense Switch | | 4A2957-01 | 1 | - | | | | | | | |
| | | | 4A0558-01 | | 1 | 1 | | | | | | |
| 3 | Control Switch | | 4A1034-01 | 1 | 1 | 1 | | | | | | |
| 4 | Plunger Switch | | 4A5034-01 | | | 1 | | | | | | |

H. Shutter Assembly
DCM-500B_H
1/2
T-0 to V-4

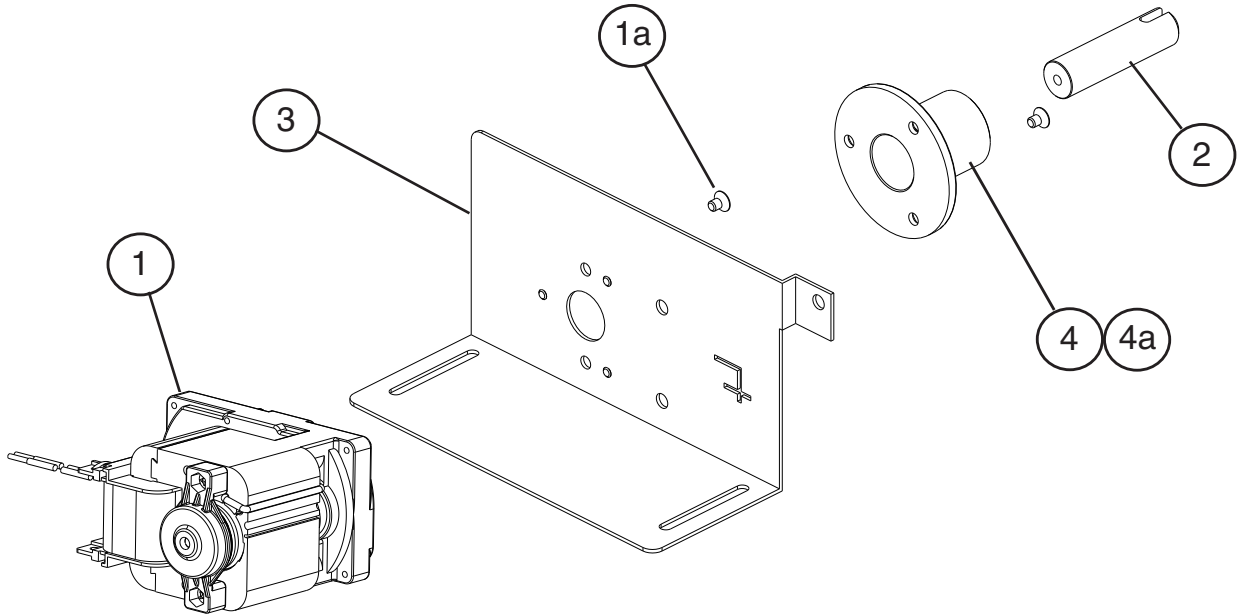


H. Shutter Assembly
DCM-500B_H
2/2
A-1 to E-0



| Title: H. Shutter Assembly Model: DCM-500_H | | | | | | | | | | | | |
|---|------------------------|--------------------------|-------------|-----------------|------------|--|--|--|--|--|--|--|
| Index No. | Description | Material or Model Number | Part Number | Required Number | | | | | | | | |
| | | | | T-0 to V-4 | A-1 to E-0 | | | | | | | |
| 1 | Shutter Base | | 3A1817-01 | 1 | - | | | | | | | |
| | | | 3A6138-01 | | 1 | | | | | | | |
| 2 | Shutter Base (B) | | 3A1762-01 | 1 | - | | | | | | | |
| 2a | Truss Head Screw | 4x8, SS | 7C32-0408 | 2 | - | | | | | | | |
| | | | 7C32-0406 | | 4 | | | | | | | |
| 3 | Solenoid | | 3U0095-01 | 1 | - | | | | | | | |
| | | | 4A0856-01 | | 1 | | | | | | | |
| 3a | Truss Head Screw | 4x12, SS | 7C32-0412 | 4 | - | | | | | | | |
| 3b | Solenoid Nut | SS | 429723-01 | 2 | - | | | | | | | |
| 4 | Solenoid Packing | | 430380-01 | 1 | - | | | | | | | |
| 5 | Packing Cover | SS | 431623-01 | 1 | - | | | | | | | |
| 6 | Link | | 432232-01 | 1 | 1 | | | | | | | |
| 6a | Truss Head Screw | 4x30, SS | 7C32-0430 | 2 | 2 | | | | | | | |
| 6b | Self-Locking "U" Nut | M4, SS | 7N22-0400 | 2 | 3 | | | | | | | |
| 7 | Collar (D) | SS | 432471-01 | 2 | 2 | | | | | | | |
| 8 | Lever | | 3A1653G01 | 1 | - | | | | | | | |
| | | | 3A6139-01 | | 1 | | | | | | | |
| 8a | Truss Head Screw | 4x30, SS | 7C32-0430 | 1 | 1 | | | | | | | |
| 8b | Self-Locking "U" Nut | M4, SS | 7N22-0400 | 1 | - | | | | | | | |
| 9 | Collar (E) | | 432240-02 | 1 | 1 | | | | | | | |
| 10 | Spring | | 432878-01 | 1 | 1 | | | | | | | |
| 11 | R-C Capacitor | | 4A1012-01 | 1 | 1 | | | | | | | |
| 12 | Truss Head Screw (GND) | 4x8, SS | 7C32-0408 | 2 | - | | | | | | | |
| 13 | Hex Nut | M4, SS | 7N12-0400 | 1 | - | | | | | | | |
| 14 | Tooth Washer | M4, SS | 7R22-0400 | 1 | - | | | | | | | |
| 15 | Plastic Sleeve Insert | | 432235-01 | 2 | - | | | | | | | |
| | | | 432240-02 | | 2 | | | | | | | |

J. Gear Motor Assembly (Agitator)
DCM-500B_H
 T-0 to E-0

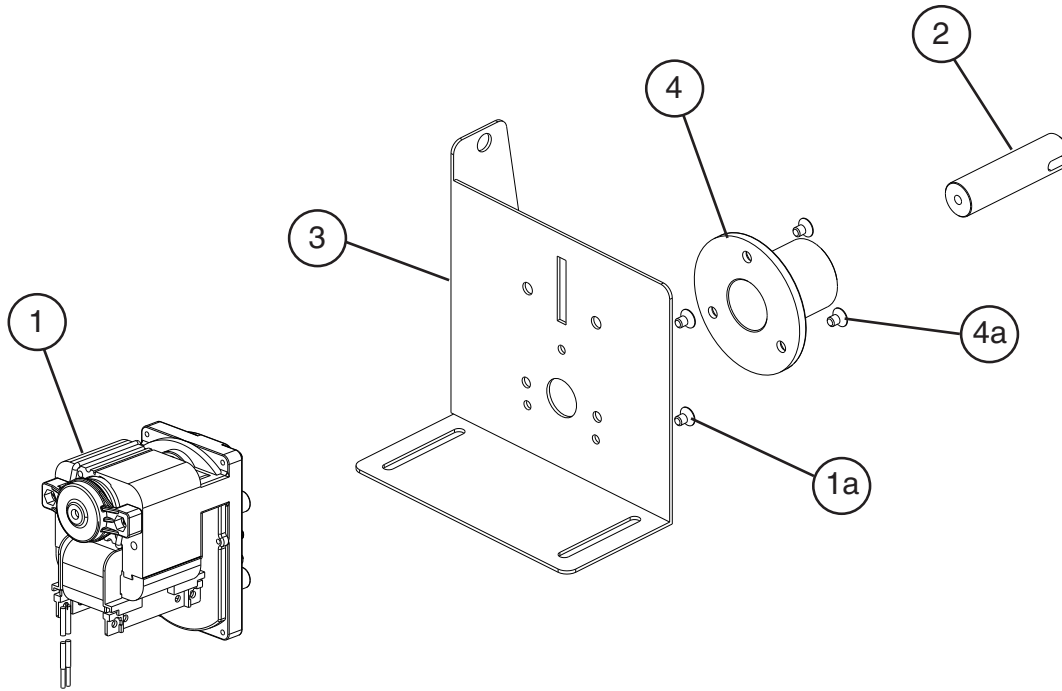


| Title: J. Gear Motor Assembly (Agitator) Model: DCM-500B_H | | | | | Required Number | | | | | | | |
|--|-------------------------|--------------------------|-------------|------------|-----------------|--|--|--|--|--|--|--|
| Index No. | Description | Material or Model Number | Part Number | T-0 to E-0 | | | | | | | | |
| 1 | Gear Motor | | 3A6786-01 | 1 | | | | | | | | |
| 1a | Flat Head Screw | 4x6, SS | 7C22-0408 | 4 | | | | | | | | |
| 2 | Joint | | 429764-01 | 1 | | | | | | | | |
| 3 | Gear Motor Bracket (B1) | | 4A0618-01 | 1 | | | | | | | | |
| 4 | Plastic Sleeve (A) | | 429761-01 | 1 | | | | | | | | |
| 4a | Flat Head Screw | 4x8, SS | 7C22-0408 | 3 | | | | | | | | |

K. Gear Motor Assembly (Dispense)

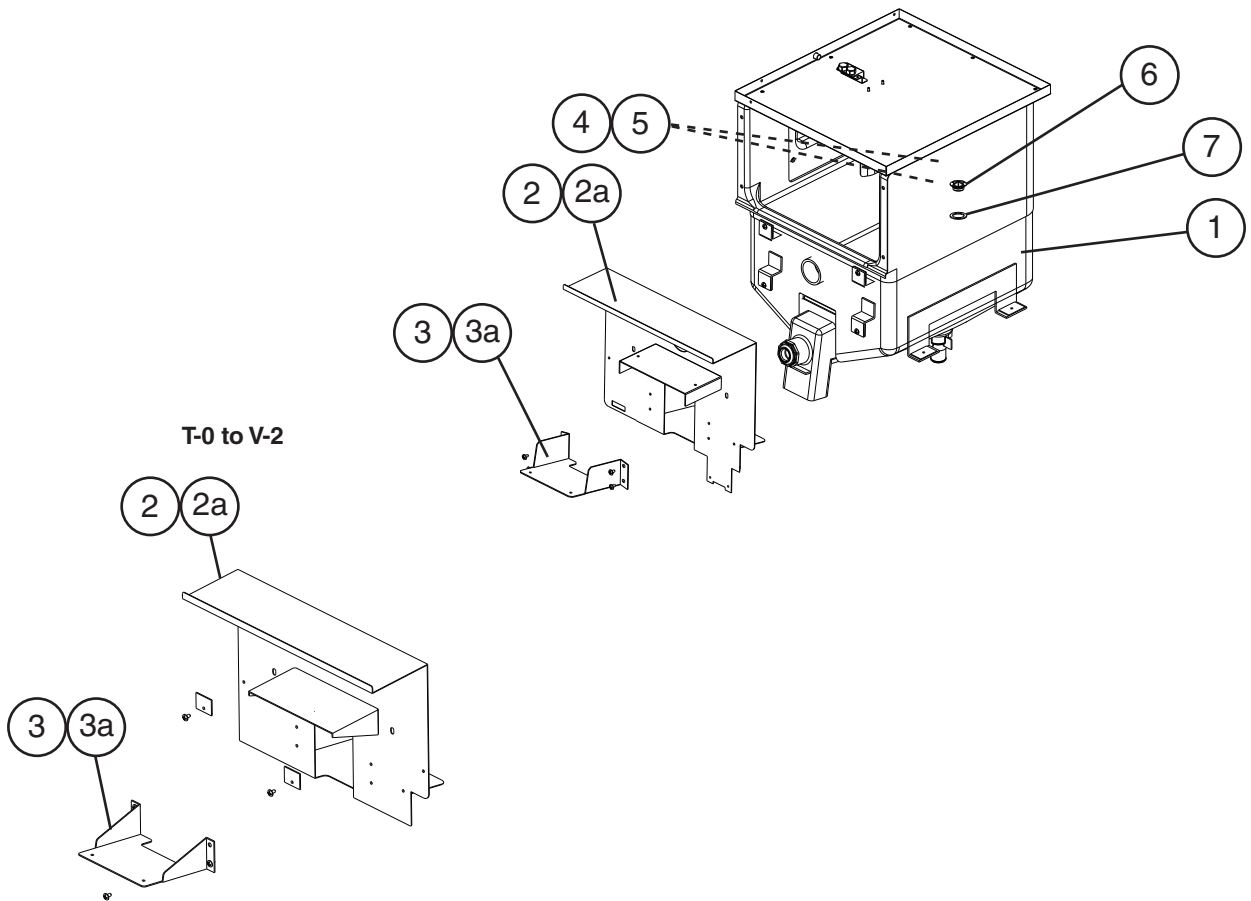
DCM-500B_H

T-0 to E-0



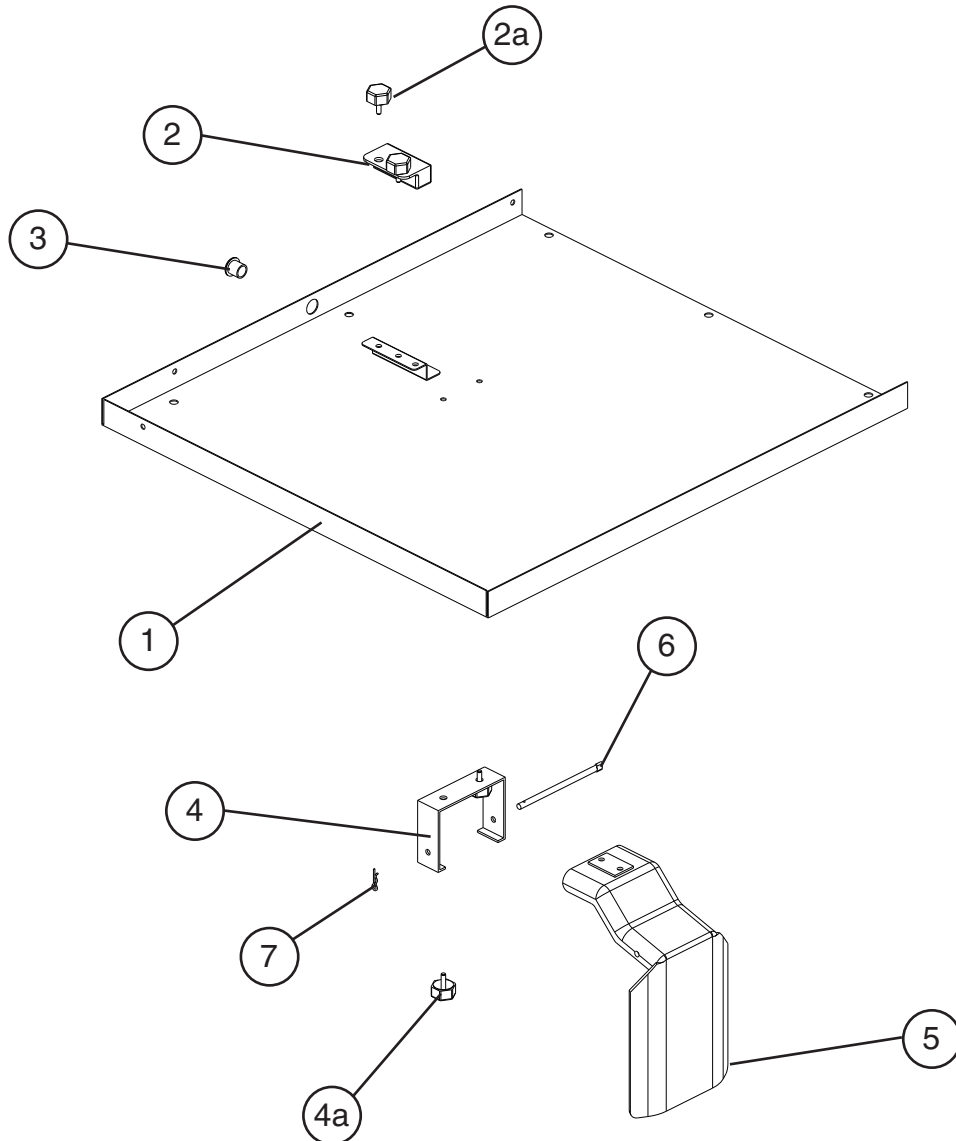
| Title: K. Gear Motor Assembly (Dispense) Model: DCM-500B_H | | | | | | | | | | | | | |
|--|-------------------------|--------------------------|-------------|-----------------|--|--|--|--|--|--|--|--|--|
| Index No. | Description | Material or Model Number | Part Number | Required Number | | | | | | | | | |
| | | | | T-0 to E-0 | | | | | | | | | |
| 1 | Gear Motor | | 3A6786-02 | 1 | | | | | | | | | |
| 1a | Flat Head Screw | 4x6, SS | 7C22-0408 | 4 | | | | | | | | | |
| 2 | Joint | | 429764-01 | 1 | | | | | | | | | |
| 3 | Gear Motor Bracket (A3) | | 3A0361-01 | 1 | | | | | | | | | |
| 4 | Plastic Sleeve (A) | | 429761-01 | 1 | | | | | | | | | |
| 4a | Flat Head Screw | 4x8, SS | 7C22-0408 | 3 | | | | | | | | | |

L. Bin Assembly
DCM-500B_H
 T-0 to E-0



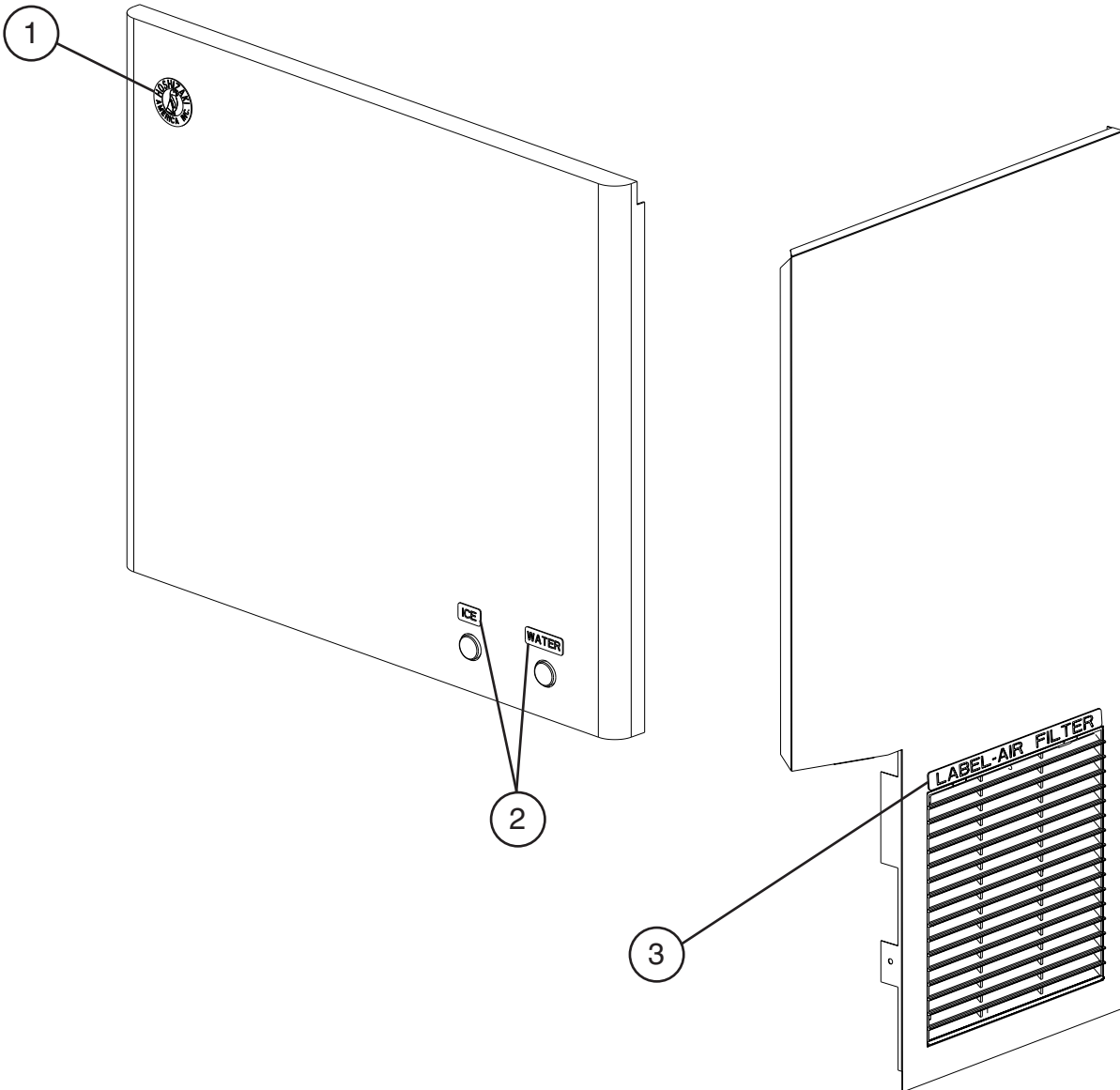
| Title: L. Bin Assembly | | Model: DCM-500B_H | | Required Number | | | | | | | |
|------------------------|------------------|--------------------------|-------------|-----------------|------------|-----|---|--|--|--|--|
| Index No. | Description | Material or Model Number | Part Number | T-0 to V-2 | V-3 to D-0 | E-0 | | | | | |
| 1 | Bin-Foamed | | 103687G01 | 1 | 1 | 1 | | | | | |
| 2 | Barrier | | 2A2008G01 | 1 | - | | | | | | |
| | | | 2A5487G01 | | 1 | - | | | | | |
| | | | 2A7679G01 | | | | 1 | | | | |
| 2a | Truss Head Screw | 4x8 SS | 7C32-0408 | 3 | 3 | 3 | | | | | |
| 3 | Sliding Bracket | | 3A0364-01 | 1 | 1 | 1 | | | | | |
| 3a | Truss Head Screw | 4x8, SS | 7C32-0408 | 4 | 4 | 4 | | | | | |
| 4 | Shaft Holder (C) | | 429818-01 | 2 | 2 | 2 | | | | | |
| 5 | O-Ring | | 7616-P032 | 2 | 2 | 2 | | | | | |
| 6 | Drain Cap | | 418294-01 | 1 | 1 | 1 | | | | | |
| 7 | Packing | | 413857-02 | 1 | 1 | 1 | | | | | |

M. Bin Top Assembly
DCM-500B_H
 T-0 to E-0



| Title: M. Bin Top Assembly | | Model: DCM-500B_H | | Required Number | | | | | | | | | | | |
|----------------------------|------------------|--------------------------|-------------|-----------------|--|--|--|--|--|--|--|--|--|--|--|
| Index No. | Description | Material or Model Number | Part Number | T-0 to E-0 | | | | | | | | | | | |
| 1 | Bin Top Cover | | 2A1716G01 | 1 | | | | | | | | | | | |
| 2 | Proximity Switch | | 4A2033-01 | 1 | | | | | | | | | | | |
| 2a | Thumbscrew | | 415949G08 | 2 | | | | | | | | | | | |
| 3 | Bushing | | 420470-07 | 1 | | | | | | | | | | | |
| 4 | Hinge | | 3A0762-01 | 1 | | | | | | | | | | | |
| 4a | Thumbscrew | | 415949G08 | 2 | | | | | | | | | | | |
| 5 | Actuator | | 208795G01 | 1 | | | | | | | | | | | |
| 6 | Shaft | | 412337-03 | 1 | | | | | | | | | | | |
| 7 | Snap Pin | | 715S-0004 | 1 | | | | | | | | | | | |

N. Accessories & Labels
DCM-500B_H
 T-0 to E-0



| Title: N. Accessories & Labels Model: DCM-500B_H | | | | | | | | | | | | | |
|--|------------------|--------------------------|-------------|-----------------|--|--|--|--|--|--|--|--|--|
| Index No. | Description | Material or Model Number | Part Number | Required Number | | | | | | | | | |
| | | | | T-0 to E-0 | | | | | | | | | |
| 1 | Penguin Label | | 456246-01 | 1 | | | | | | | | | |
| 2 | Ice/Water Label | | 4A2954-01 | 1 | | | | | | | | | |
| 3 | Air Filter Label | | 426177-01 | 1 | | | | | | | | | |