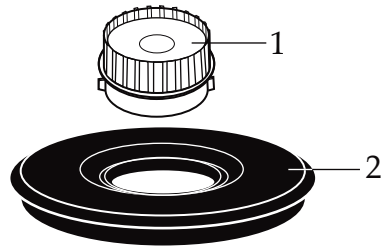


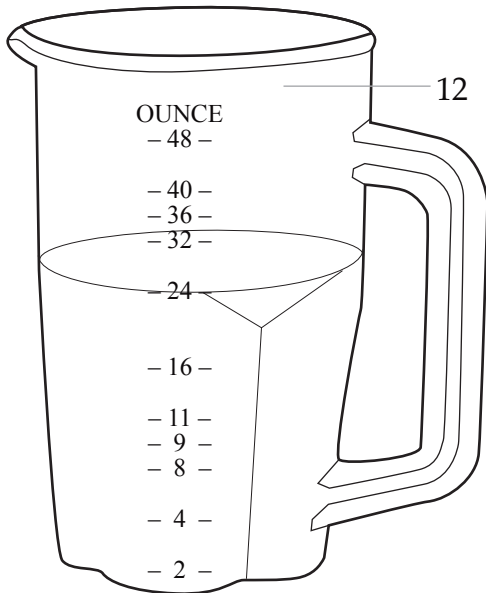
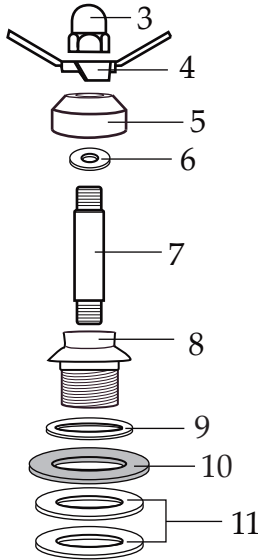
WARING COMMERCIAL®

48 oz. Container Assembly for 7015

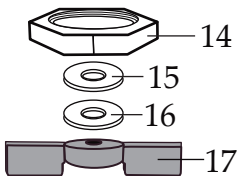
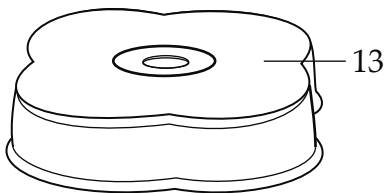
CAC23 - 033032



500664
2 Piece Lid



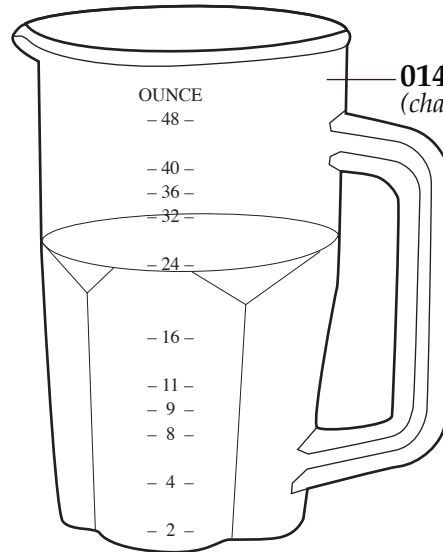
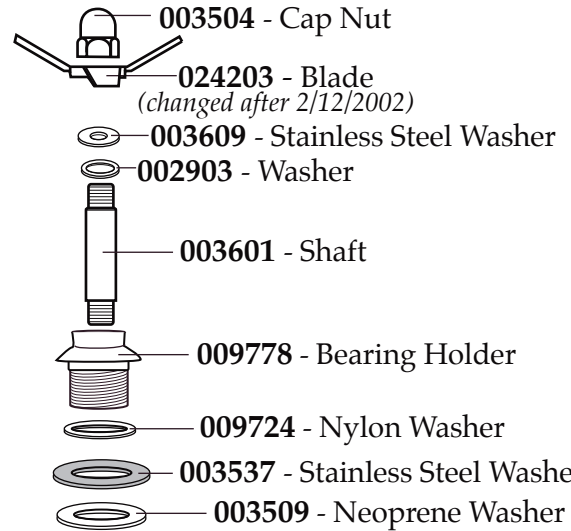
General Electric RTV108 translucent silicone rubber. Apply around entire perimeter in this area around the two bosses. Dimples in bosses must be filled. Cured sealant must be flush with outer wall of jar & underside of adapter.



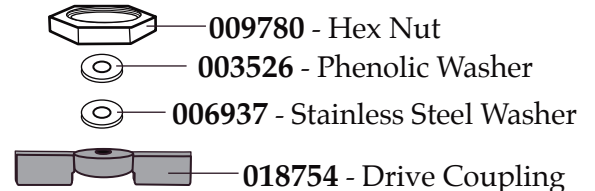
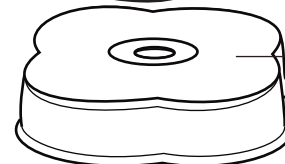
501429

Container with Blending Assembly

(on units after 7/23/2010)



014549-E - Container
(changed after 2/25/2008)



501113

Container with Blending Assembly

Illustration #	Part #	Description
1	011700	Center Lid
2	013442	Vinyl Outer Lid
3	003504	Cap Nut
4	024203	Blade <i>(changed after 2/12/2002)</i>
5	014846	Bearing Cap
6	002903	Washer
7	003601	Drive Shaft
8	009778	Bearing Holder
9	009724	Nylon Washer
10	003537	Stainless Steel Washer
11	003509	Neoprene Washer (rubber 2 required)
12	014549-E	48 oz. Eastman Container <i>(changed after 2/25/2008)</i>
13	015055	Container Adapter
14	009780	Hex Nut /left handed thread (apply a thin film of Loctite 425 to threads)
15	003526	Phenolic Washer
16	006937	Stainless Steel Washer
17	018754	Coupling