

# Parts Catalog



**G10 Slicer**

## SLICING MACHINE

MODEL: G10

07-10-14N

Serial Number 401100 and Up

IMPORTANT!

TO EXPEDITE SHIPMENT OF PARTS, ALWAYS SPECIFY MODEL, REV,  
PART NUMBER, AND SERIAL NUMBER OF SLICER.

### GLOBE FOOD EQUIPMENT COMPANY

2215 East River Road  
Dayton, Ohio 45439

#### Parts Department

Toll Free 1-800-745-6238 • Fax (937) 290-0585

E-Mail: [info@globefoodequip.com](mailto:info@globefoodequip.com)

Website: [www.globefoodequip.com](http://www.globefoodequip.com)

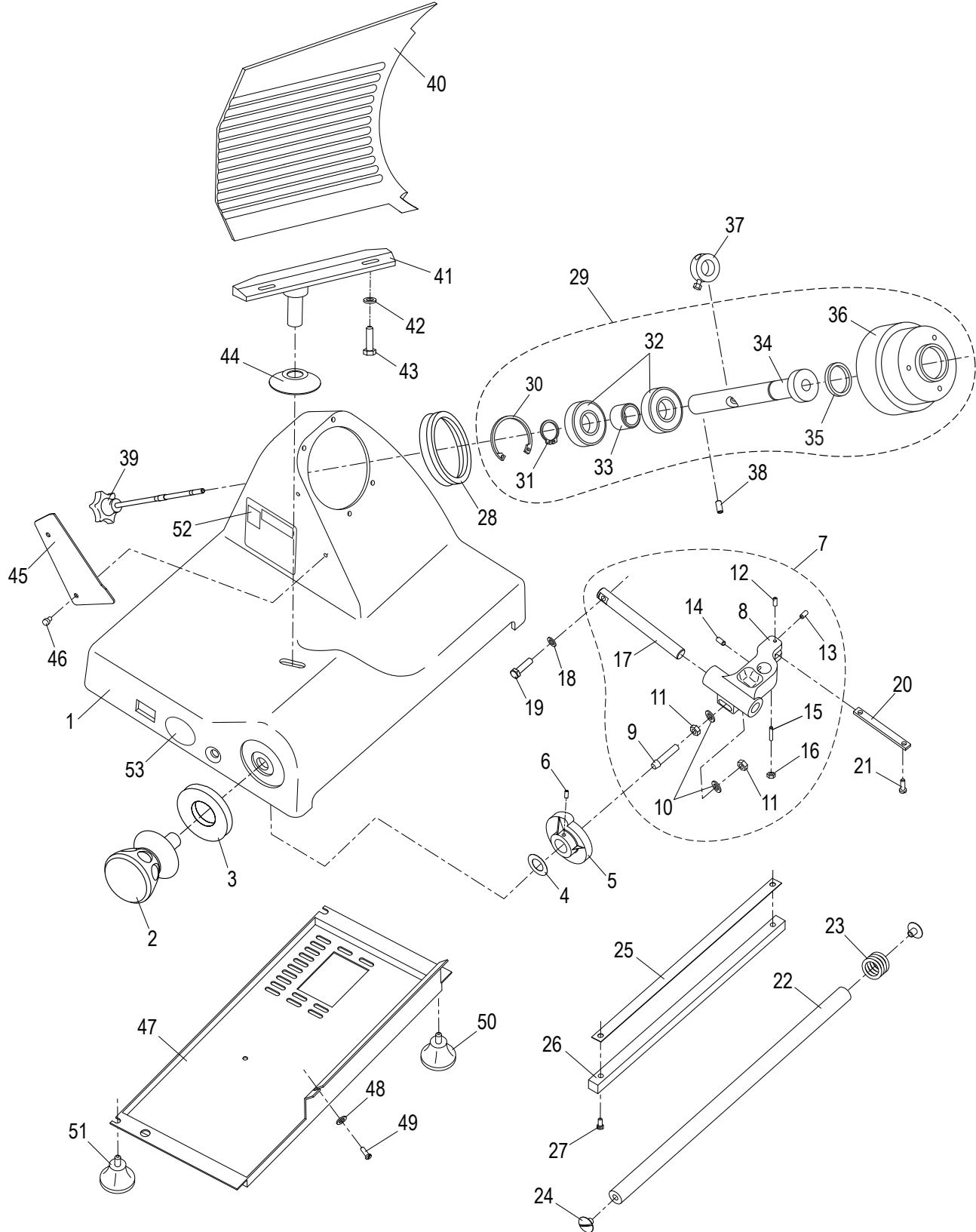
Not for resale



# TABLE OF CONTENTS

Serial Number 401100 and Up	Page
<u>Base Components</u>	<u>1 - 2</u>
<u>Chute Components</u>	<u>3</u>
<u>Knife &amp; Sharpener Components</u>	<u>4</u>
<u>Electrical Components</u>	<u>5</u>
<u>Wiring Diagram</u>	<u>6</u>

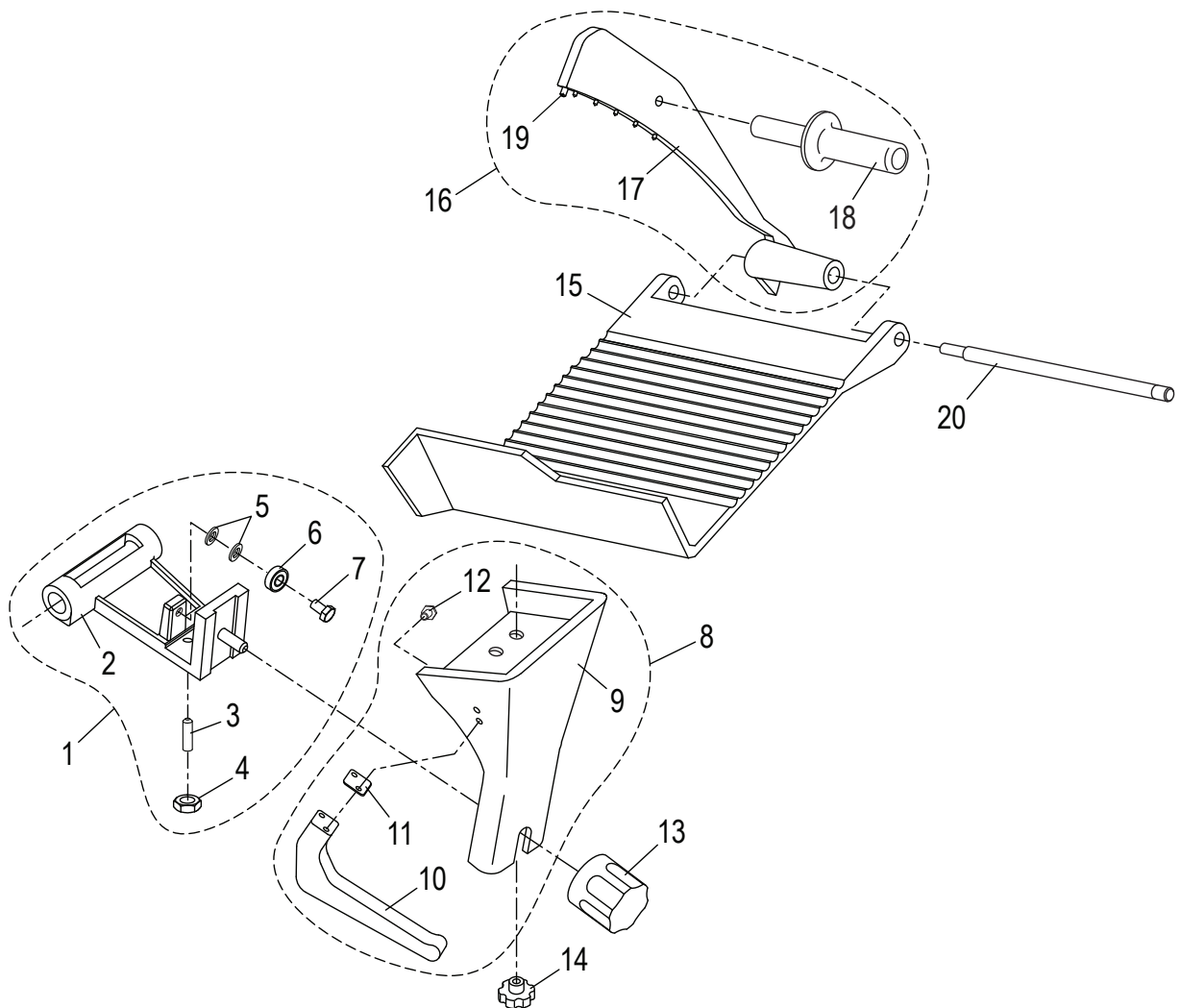
# G10 BASE COMPONENTS



# G10 BASE PARTS LIST

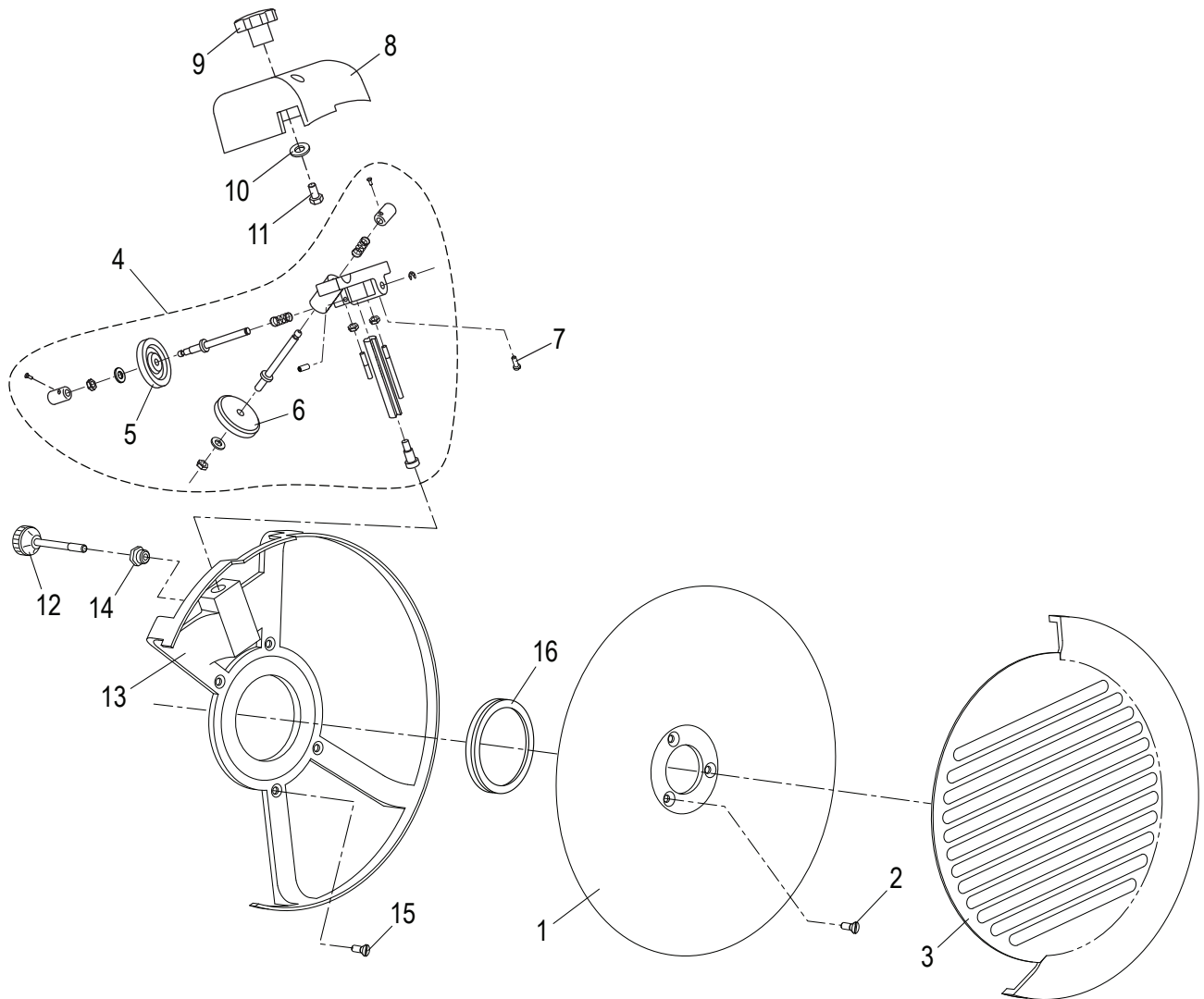
Item	Description	Qty	Part Number	Hardware
1	Slicer Base	1	-	
2	Table Adjustment Knob	1	M00209	
3	Table Adjustment Ferrule	1	M00211	
4	Wave Washer	1	M003	
5	Table Adjustment Cam	1	M004	
6	Table Adjustment Cam Set Screw	2	H00181	
7	Table Slide Assy (Item 8 to 17)	1	M305	
8	Table Slide	1	-	
9	Stud, Cam Actuator	1	M013	
10	Flat Washer	2	H00191	
11	Hex Nut, Table Slide Bottom	2	H00192	
12	Set Screw, Table Slide Top	1	H00182	
13	Set Screw, Table Slide End	1	H00185	
14	Set Screw, Table Slide Side	2	H00186	
15	Set Screw, Table Slide Bottom	1	H00188	
16	Hex Nut, Table Slide Bottom	1	H00028	
17	Rod, Table Slide	1	M014	
18	Slide Rod Flat Washer	2	H00191	
19	Slide Rod Screw	2	H00116	
20	Table Slide Plate	1	M016	
21	Slide Plate Screw	2	H00061	
22	Carriage Slide Rod	1	M059	
23	Carriage Spring	1	MCR27	
24	Slide Rod Screw	2	M060	
25	Wear Strip, Slide Bar	1	M063	
26	Slide Bar, Square	1	M062	
27	Slide Bar Screw	2	H00056	
28	Motor Hub Seal	1	MGI77/5	
29	Knife Hub Assembly (Item 30- 36)	1	M00336	
30	Retaining Ring, Internal	1	H00193	
31	Retaining Ring, External	1	H00195	
32	Bearing	2	M020	
33	Spacer, Knife Pulley	1	M021	
34	Shaft, Knife Hub - Switch Collar	1	M00337	
35	Oil Seal, Hub	1	MR12/7	
36	Pulley, Knife Hub	1	MCR12/2	
37	Microswitch Collar	1	MCB61	
38	Knife Shaft Set Screw	1	H00184	
39	Knife Cover Release Knob	1	M00225	
40	Table	1	M00230	
41	Table Support	1	M00231	
42	Table Support Washer	2	H00191	
43	Table Support Screw	2	H00196	
44	Hole Cover, Base	1	M00228	
45	Knife Wiper	1	M097	
46	Thumb Screw, Knife Wiper	2	MCC23	
47	Bottom Cover	1	M113	
48	Flat Washer	1	H00063	
49	Cover Screw	1	H00061	
50	Back Foot	2	M115	
51	Front Foot	2	M00229	
52	Warning label	1	M91022	
53	Label, Globe Logo	1	M91021	

# G10 CHUTE COMPONENTS



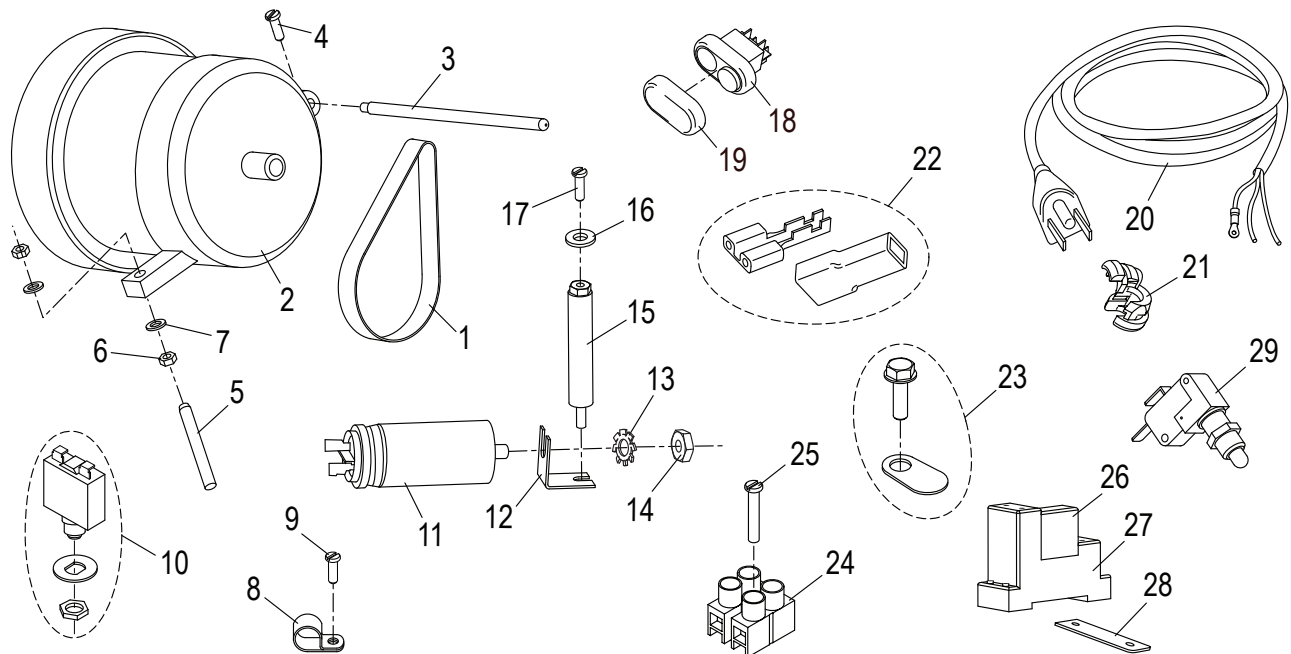
Item	Description	Qty	Part Number	Hardware
1	Chute Slide Assembly (Item 2 - 7)	1	M00265	
2	Chute Slide	1	-	
3	Brass Stud	1	M053	
4	Stud Nut	1	H00192	
5	Bearing Washer	2	H00191	
6	Bearing Screw	1	M056	
7	Screw	1	H00117	
8	Chute Support Assembly (Item 9 - 12)	1	M00263	
9	Chute Support	1	M00266	
10	Chute Support Handle	1	M067	
11	Seal, Chute Support Handle	1	M00267	
12	Screw, Chute Support Handle	2	H00156	
13	Chute Support Knob	1	M00268	
14	Chute Release Knob	1	M00269	
15	Chute	1	M00275	
16	End Weight Assembly (Item 17 - 20)	1	M00260	
17	End Weight	1	-	
18	End Weight Handle	1	M00261	
19	Bumper, End Weight	1	MC39	
20	End Weight Rod	1	M00270	

# G10 KNIFE AND SHARPENER COMPONENTS



Item	Description	Qty	Part Number	Hardware
1	Knife	1	MCB13	
2	Screw, Knife Mounting	3	H00201	
3	Knife Cover	1	M00327	
4	Sharpener Frame Assembly	1	M00397	
5	Deburring Stone	1	M092	
6	Sharpening Stone	1	MCC17	
7	Sharpener Cover Screw	2	H00187	
8	Sharpener Cover	1	M074	
9	Sharpener Cover Knob	1	M075	
10	Flat Washer	1	M035	
11	Screw, Sharpener Cover Knob	1	H00197	
12	Sharpener Release Knob	1	M096	
13	Knife Rim Guard	1	MCRB14/1	
14	Insert, Knife Rim Guard	1	M045	
15	Screw, Rim Guard	4	H00435	
16	V Ring, Knife Seal VA 80	1	M00405	

# G10 ELECTRICAL COMPONENTS



Item	Description	Qty	Part Number	Hardware
1	Drive Belt	1	MCC51	
2	Knife Motor	1	MCR43/2	
3	Post, Motor Pivot	1	M031	
4	Screw	1	H00189	
5	Set Screw	1	M033	
6	Hex Nut	2	M034	
7	Flat Washer	2	M035	
8	Cable Clamp	1	M037	
9	Screw, Clable Clamp	1	H00061	
10	Switch, Motor Reset	1	M038	
11	Capacitor, 16 $\mu$ f	1	M039	
12	Bracket, Capacitor Mounting	1	-	
13	Lock Washer	1	H00335	
14	Hex Nut	1	H00192	
15	Standoff, Cover Spacer	1	M043	
16	Cover Washer	1	M035	
17	Cover Mounting Screw	1	H00061	
18	Power Switch	1	MCR69	
19	Cover, Power Switch	1	MCR59	
20	Power Cord & Plug	1	M110	
21	Strain Relief	1	M111	
22	Terminal & Insulator Set	15	M00233	
23	Ground Screw/Marking Tab Set	1	M00334	
24	Terminal Block	1	MB80/2	
25	Terminal Block Mounting Screw	1	H00203	
26	Relay	1	MCR75	
27	Relay Socket	1	MCR76	
28	Relay Mounting Plate	1	M00360	
29	Hub Assembly Microswitch	1	M026	



# WIRING DIAGRAM - 115V, 50/60/Hz, 1 PH

