

Parts Catalog



SP05 Mixer

MIXER

MODELS: SP05 and SP05-Q

08-01-14

IMPORTANT!

TO EXPEDITE SHIPMENT OF PARTS, ALWAYS SPECIFY MODEL, REV,
PART NUMBER, AND SERIAL NUMBER OF SLICER.

GLOBE FOOD EQUIPMENT COMPANY

2215 East River Road
Dayton, Ohio 45439

Parts Department

Toll Free 1-800-745-6238 • Fax (937) 290-0585

E-Mail: info@globefoodequip.com

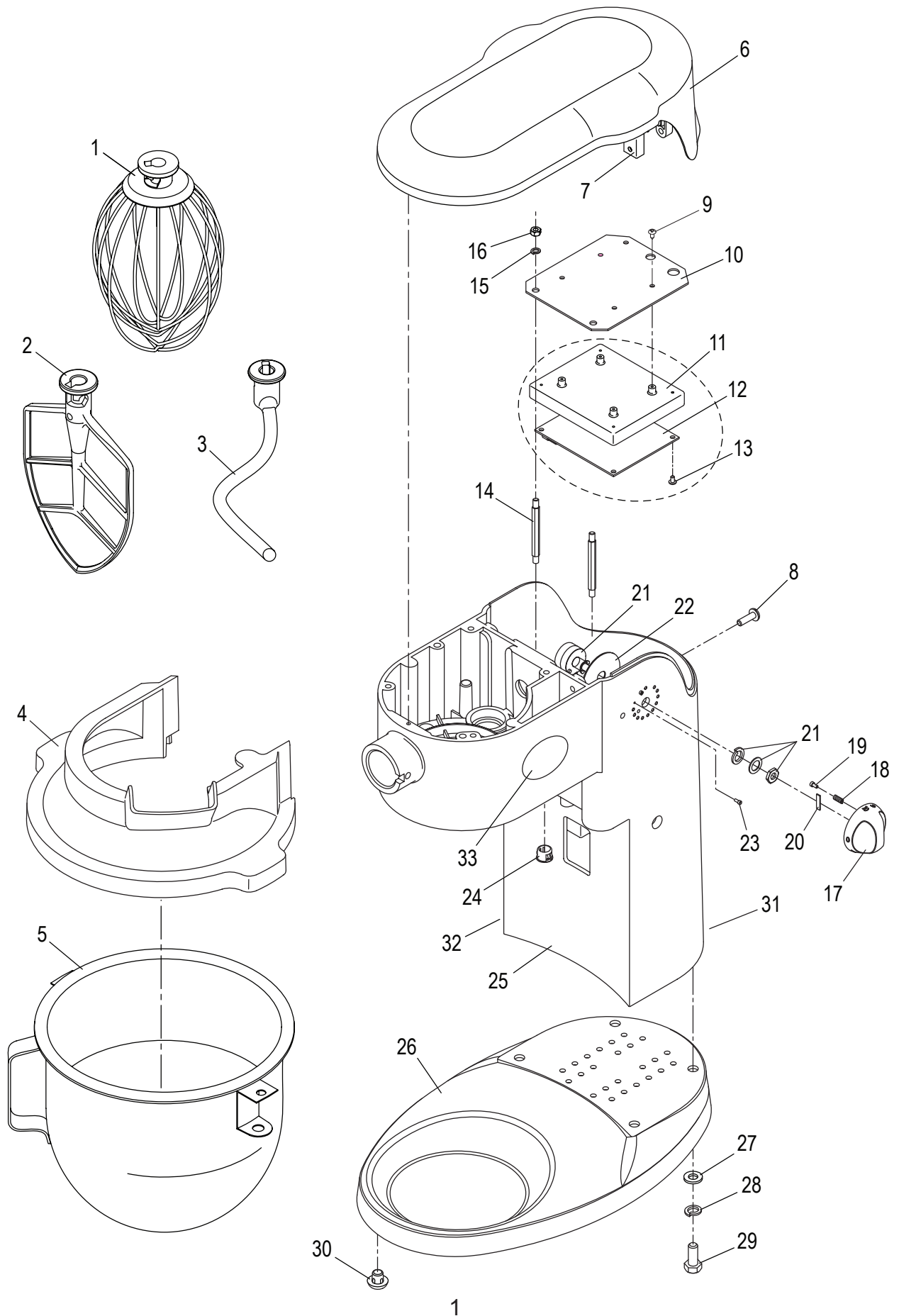
Website: www.globefoodequip.com

Not for resale

TABLE OF CONTENTS

| Serial Number 6513801 and Up | Page |
|------------------------------|-------|
| Mixer Base Components | 1 - 2 |
| Bowl Lift Components | 3 - 4 |
| Transmission | 5 - 6 |
| Motor | 7 |
| Wiring Diagrams | 8 |

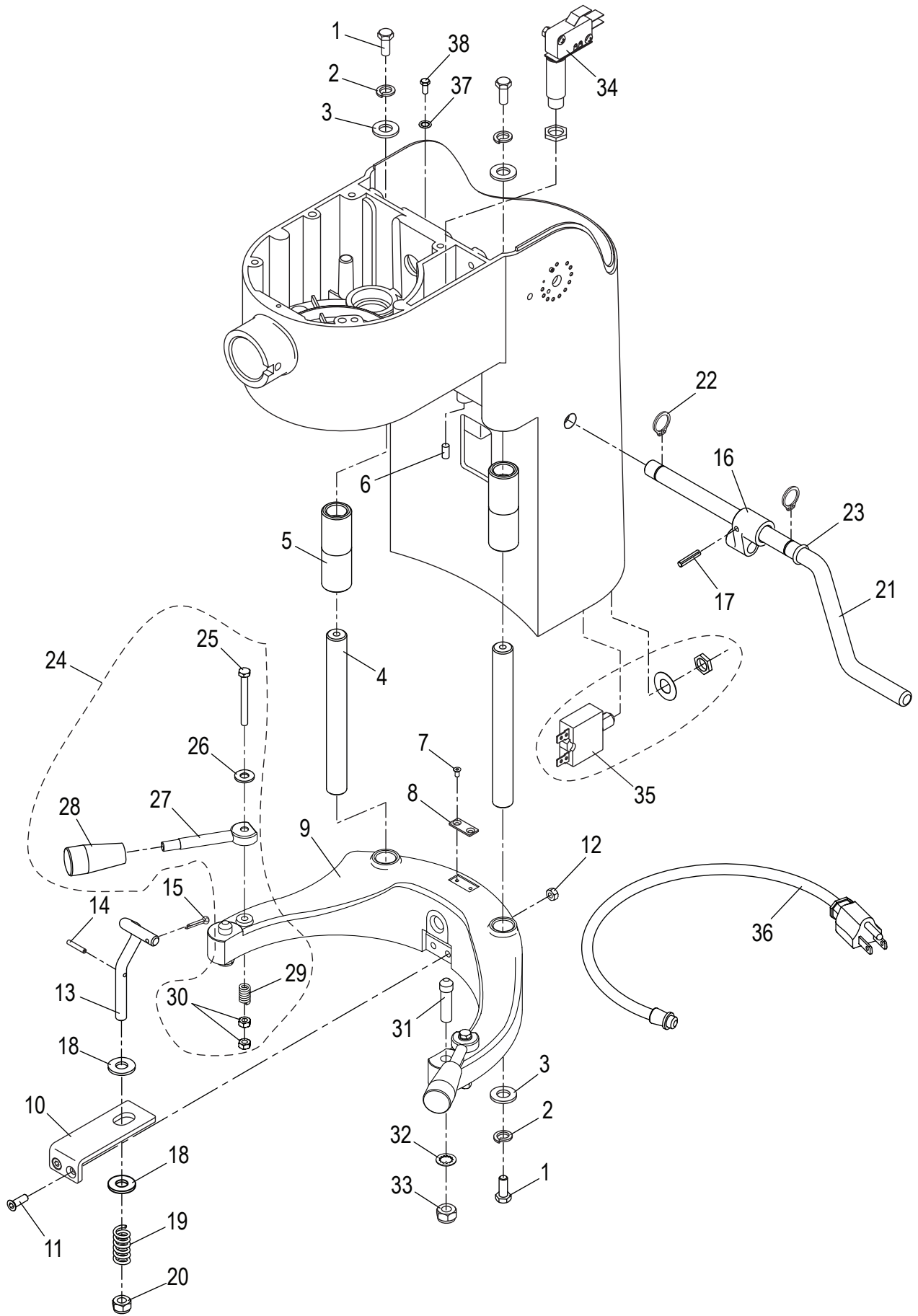
SP05/SP05-Q MIXER BASE COMPONENTS



SP05/SP05-Q BASE PARTS LIST

| Item | Description | Qty | Part Numbers | Standard Hardware |
|------|------------------------------|-----|--------------|--------------------------|
| 1 | Whip | 1 | XXWhip-05 | |
| 2 | Beater | 1 | XXBeat-05 | |
| 3 | Spiral Hook | 1 | XXHook-05 | |
| 4 | Safety Guard, SP05 | 1 | X5E01-1 | |
| | Safety Guard, SP05-Q | | X5E01 | |
| 5 | Mixer Bowl | 1 | XXBowl-05 | |
| 6 | Mixer Cover | 1 | X5A13-1 | |
| 7 | Mixer Cover Reinforcement | 1 | X5A39 | |
| 8 | Mixer Cover Screw | 1 | H00523 | M5x18 Truss Head Screw |
| 9 | Circuit Board Housing Screw | 4 | X00524 | |
| 10 | Housing Mounting Plate | 1 | X5A21 | |
| 11 | Circuit Board Housing | 1 | X5A33 | |
| 12 | Electronic Circuit Board | 1 | X5A20-1 | |
| 13 | Circuit Board Mounting Screw | 4 | X00525 | |
| 14 | Mounting Plate Standoff | 2 | X5A41 | |
| 15 | Standoff Washer | 2 | H00320 | M5 Split Lock Washer |
| 16 | Mounting Plate Nut | 2 | H00028 | M5 Hex Nut |
| 17 | On/Off/Speed Selector | 1 | X5A05-1 | |
| 18 | Selector Spring | 1 | X5A08-1 | |
| 19 | Selector Plunger | 1 | X5A09 | |
| 20 | Selector Alignment Tab | 1 | X5A44 | |
| 21 | Potentiometer w/Hardware | 1 | X5A15 | |
| 22 | Potentiometer Insulation Pad | 1 | X5A16 | |
| 23 | Selector Stop Screw | 2 | H00526 | M2x5 Socket Hd Cap Screw |
| 24 | Hole Plug (SP05 only) | 1 | X5A26 | |
| 25 | Mixer Body | 1 | X5A25-1 | |
| 26 | Mixer Base | 1 | X5A27 | |
| 27 | Mixer Mounting Washer | 4 | H00191 | M8 Flat Washer |
| 28 | Mixer Mounting Lock Washer | 4 | H00527 | M8 Split Lock Washer |
| 29 | Mixer Mounting Screw | 4 | H00117 | M8x20 Hex Head |
| 30 | Mixer Foot | 4 | X5UH-1260 | |
| 31 | Label, Electrical Hazard | 1 | X91018 | |
| 32 | Label Warning | 1 | X91019 | |
| 33 | Label, Globe Logo | 1 | 871-3 | |

SP05/SP05-Q BOWL LIFT COMPONENTS



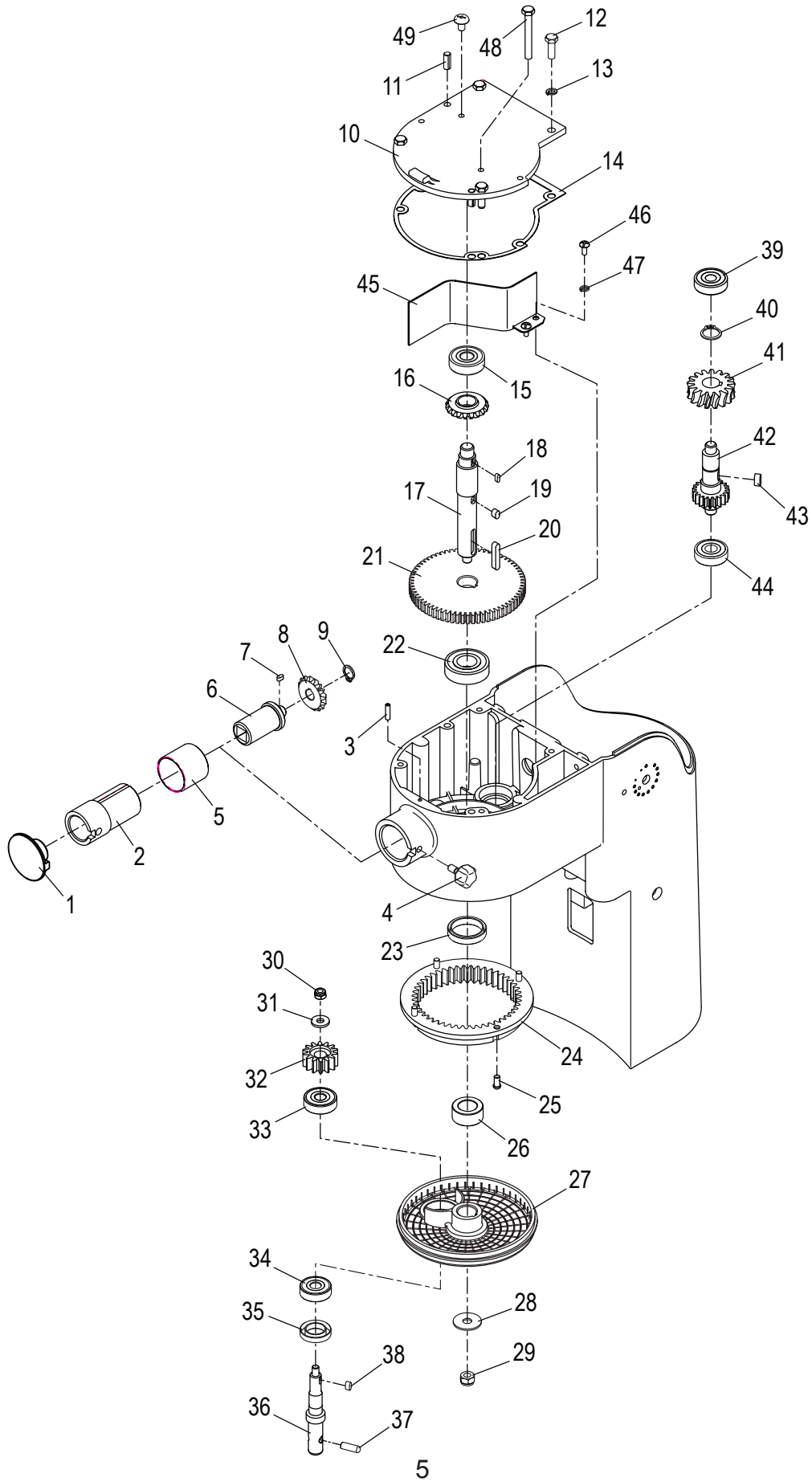
SP05/SP05-Q BOWL LIFT PARTS LIST

| Item | Description | Part Number | Qty | Standard Hardware |
|------|--|-------------|-----|---------------------------|
| 1 | Lift Shaft Mounting Screw | H00197 | 4 | M6x15 Hex Head |
| 2 | Lift Shaft Lock Washer | H00042 | 4 | M6 Split Lock Washer |
| 3 | Lift Shaft Washer | H00014 | 4 | M6 Flat Washer |
| 4 | Bowl Lift Shaft | X5B03 | 2 | |
| 5 | Lift Shaft Bushing | X5B04 | 2 | |
| 6 | Bowl Limit Set Screw | H00183 | 1 | M5x10 Cup Point |
| 7 | Limit Pad Mounting Screw | H00528 | 2 | M3x5 Flat Head |
| 8 | Bowl Limit Pad | X5B07 | 1 | |
| 9 | Bowl Cradle | X5B08 | 1 | |
| 10 | Bowl Lift Bracket | X5B09 | 1 | |
| 11 | Lift Bracket Mounting Screw | H00305 | 2 | M5x15 Flat Head |
| 12 | Lift Bracket Nut | H00028 | 2 | M5 Hex Nut |
| 13 | Bowl Lift Rod | X5B12 | 1 | |
| 14 | Lift Rod Pin | H00529 | 1 | M3x16 Spring Pin |
| 15 | Lift Rod Attachment Pin | H00530 | 1 | M2x20 Cotter Pin |
| 16 | Bowl Lift Connector | X5B14 | 1 | |
| 17 | Connector Pin | H00531 | 1 | M4x20 Spring Pin |
| 18 | Lift Rod Washer | H00191 | 2 | M8 Flat Washer |
| 19 | Lift Rod Spring | X08091 | 2 | |
| 20 | Lift Rod Lock Nut | H00532 | 1 | M8 Lock Nut, Nylon Insert |
| 21 | Bowl Lift Handle | X5B20 | 1 | |
| 22 | Bowl Lift Handle Retaining Ring | X5B19 | 2 | STW-12 |
| 23 | Handle Seal Ring | X5B22 | 1 | 16x10x3mm O-Ring |
| 24 | Bowl Clamp Assembly (Set of 2) | X08089-93 | 1 | |
| 25 | Bowl Clamp Screw | - | 2 | |
| 26 | Bowl Clamp Washer | - | 2 | #10 Flat Washer |
| 27 | Bowl Clamp Arm | - | 2 | |
| 28 | Bowl Clamp Handle | X08090 | 2 | |
| 29 | Bowl Clamp Spring | - | 2 | |
| 30 | Bowl Clamp Nut | - | 4 | #10 Hex Nut |
| 31 | Bowl Lock Pin | X5B34 | 2 | |
| 32 | Bowl Lock Washer | H00536 | 2 | M8 Internal Tooth |
| 33 | Bowl Lock Nut, Nylon Insert | H00532 | 2 | M8 Lock Nut, Nylon Insert |
| 34 | Bowl Guard Interlock Microswitch Kit (SP05-Q Only) | X5E02 | 1 | |
| 35 | *Overload Relay, 5 Amp | X00537 | 1 | |
| | **Overload Relay, 8 Amp | X00538 | | |
| 36 | Power Cord and Plug | X5B23 | 1 | |
| 37 | Ground Screw Lock Washer | H00540 | | M5 Internal Tooth |
| 38 | Ground Screw (Green) | X00539 | 1 | M5x10 Hex Head |

*Before serial number 6513800.

**Serial number 6513800 and up.

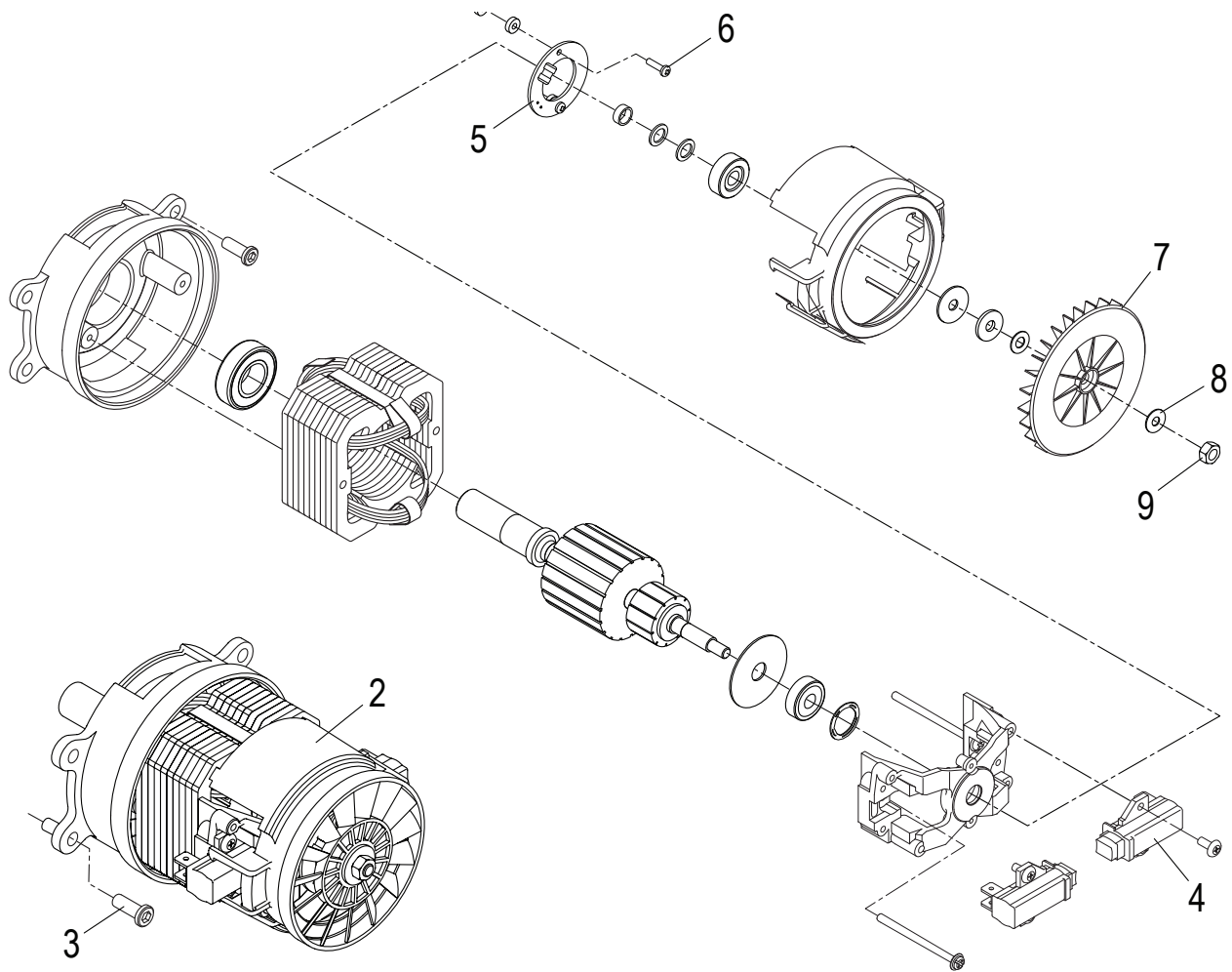
SP05/SP05-Q TRANSMISSION



SP05/SP05-Q TRANSMISSION PARTS LIST

| Item | Description | Part Number | Qty | Standard Hardware |
|------|---------------------------------------|-------------|-----|---------------------------|
| 1 | Attachment Hole Plug | X5C01 | 1 | |
| 2 | Attachment Hub | X5C02 | 1 | |
| 3 | Attachment Hub Set Screw | H00541 | 1 | M4x16 Cup Point |
| 4 | Attachment Release Knob | X5C21 | 1 | |
| 5 | Anti-Oil Bushing | X5C47 | 1 | |
| 6 | Level Drive Gear Hub | X5C03 | 1 | |
| 7 | Level Drive Gear Key | H00542 | 1 | 3x3x6mm, Round Ends |
| 8 | Level Drive Gear (16T) | X5C05 | 1 | |
| 9 | Level Drive Gear Retaining Ring | X5C06 | 1 | STW-10 |
| 10 | Transmission Case Cover | X5C09 | 1 | |
| 11 | Locating Pin | X5C19 | 2 | M6 Spring Pin |
| 12 | Transmission Cover Screw | H00116 | 4 | M6x20mm Hex Head |
| 13 | Lock Washer | H00042 | 4 | M6 Split Lock |
| 14 | Gasket | X5C10 | 1 | |
| 15 | Drive Shaft Upper Ball Bearing | X10117 | 1 | |
| 16 | Level Drive Gear (20T) | X5C12 | 1 | |
| 17 | Drive Shaft | X5C13 | 1 | |
| 18 | Level Drive Gear Key | H00543 | 1 | 3x3x8mm, Round Ends |
| 19 | Drive Gear Key | H00544 | 1 | 5x5x8mm, Round Ends |
| 20 | Planetary Holder Key | H00545 | 1 | 5x5x28mm, Round Ends |
| 21 | Drive Gear (66T) | X5C17-1 | 1 | |
| 22 | Drive Shaft Lower Ball Bearing | X5C18 | 1 | |
| 23 | Drive Shaft Oil-Seal | X5C22 | 1 | |
| 24 | Internal Planetary Gear (47T) | X5C23 | 1 | |
| 25 | Planetary Gear Mounting Screw | H00546 | 4 | M5x10mm Button Head |
| 26 | Oil-Seal Bushing (Set) | X08116-1 | 1 | |
| 27 | Planetary Holder | X5C32 | 1 | |
| 28 | Drive Shaft Washer | X00547 | 1 | M8x30mm Flat Washer |
| 29 | Drive Shaft Nut | H00532 | 1 | M8 Lock Nut, Nylon Insert |
| 30 | Pinion Gear Nut | H00548 | 1 | M6 Lock Nut, Nylon Insert |
| 31 | Pinion Gear Washer | H00120 | 1 | M6 Flat Washer, Lg Dia |
| 32 | Pinion Gear (14T) | X5C30 | 1 | |
| 33 | Planetary Shaft Upper Ball Bearing | X5C31 | 1 | |
| 34 | Planetary Shaft Lower Ball Bearing | X5C35 | 1 | |
| 35 | Planetary Oil-seal | X5C36 | 1 | |
| 36 | Planetary Shaft | X5C37 | 1 | |
| 37 | Dowel Pin | X08037 | 1 | |
| 38 | Pinion Gear Key | H00549 | 1 | 4x4x8mm, Round Ends |
| 39 | Transmission Shaft Upper Ball Bearing | X5C39 | 1 | |
| 40 | Level Drive Gear Retaining Ring | X5C40 | 1 | STW-15 |
| 41 | Level Drive Gear (16T) | X5C41 | 1 | |
| 42 | Transmission Shaft (22T) | X5C42-1 | 1 | |
| 43 | Level Drive Gear Key | H00550 | 1 | 5x5x12mm, Round Ends |
| 44 | Transmission Shaft Lower Ball Bearing | X5C31 | 1 | |
| 45 | Divider Plate | X5C45 | 1 | |
| 46 | Divider Plate Lock Washer | H00551 | 2 | M4 Split Lock |
| 47 | Divider Plate Mounting Screw | H00552 | 2 | M4x10 Pan Head |
| 48 | Screw, Hex Head | H00553 | 1 | M6x55mm |
| 49 | Screw, Pan Head | H00554 | 1 | M6x10mm |

SP05/SP05-Q MOTOR COMPONENTS



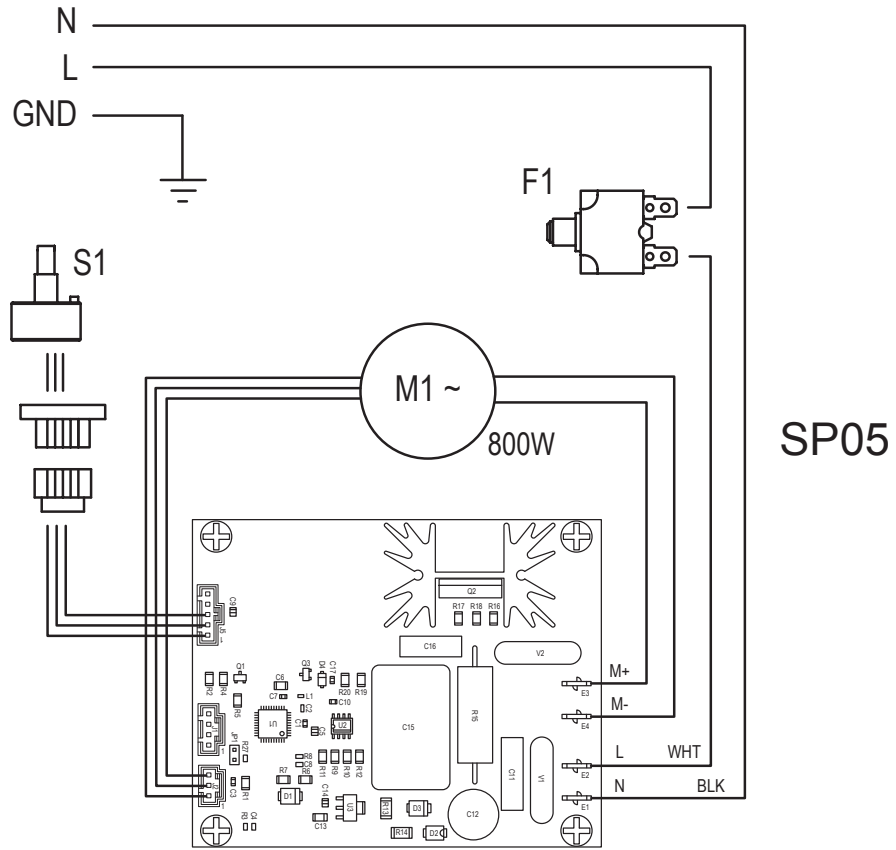
| Item | Description | Part Number | Qty | Standard Hardware |
|------|------------------------------------|-------------|-----|-------------------------|
| 1 | *Motor Replacement Kit (Not shown) | X00558 | 1 | |
| 2 | **Motor Assembly | X00559 | 1 | |
| 3 | Motor Mounting Screw | X00556 | 4 | M6x16 SHCS |
| 4 | **Carbon Brush, New Style | X5D09-1 | 2 | |
| | †Carbon Brush, Old Style | X5D09 | | |
| 5 | Tachometer | X5D15-1 | 1 | |
| 6 | Tachometer Mounting Screw | H00557 | 2 | M3x14 Pan Head, Nylon |
| 7 | **Motor Fan, New Style | X5D11-1 | 1 | |
| | †Motor Fan, Old Style | X5D11 | | |
| 8 | Motor Assembly Washer | H00120 | 1 | M6x18mm Flat Washer |
| 9 | Nut, Reverse Thread (LH) | H00555 | 1 | M6-1.0 Hex Nut – LH Thd |

**Serial number 6513800 and up.

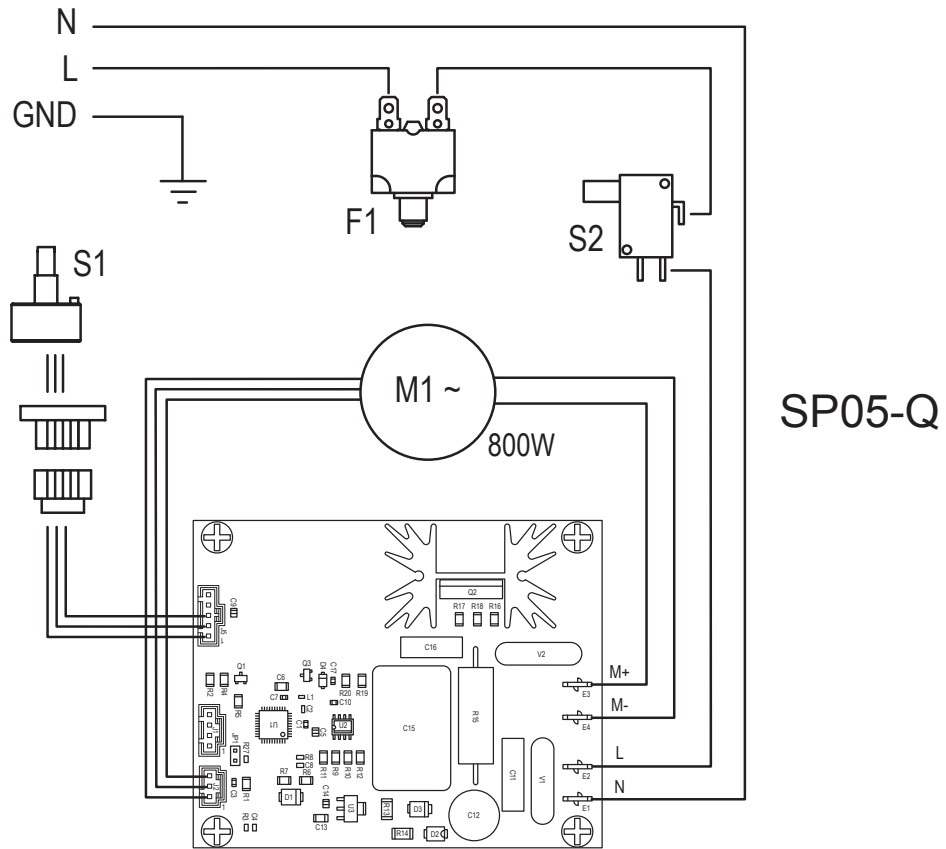
†Before serial number 6513800.

*Note: Older Mixers with 4 or 5 Amp Overload Relay require Relay replacement to comply with higher amperage replacement Motor.

SP05/SP05-Q WIRING DIAGRAMS 115V/60Hz/1 PH



SP05



SP05-Q

