

WARING COMMERCIAL®

FP40 /batch bowl only

FP40C /batch bowl & continuous feed bowl

Unit Information

1 1/2 HP Motor

1750 RPM's

720 Watts

60 Hz - 6.0 Amps

5 Year Motor and 2 Year Parts Warranty

Batch Bowl

Holds 4 quarts dry ingredients

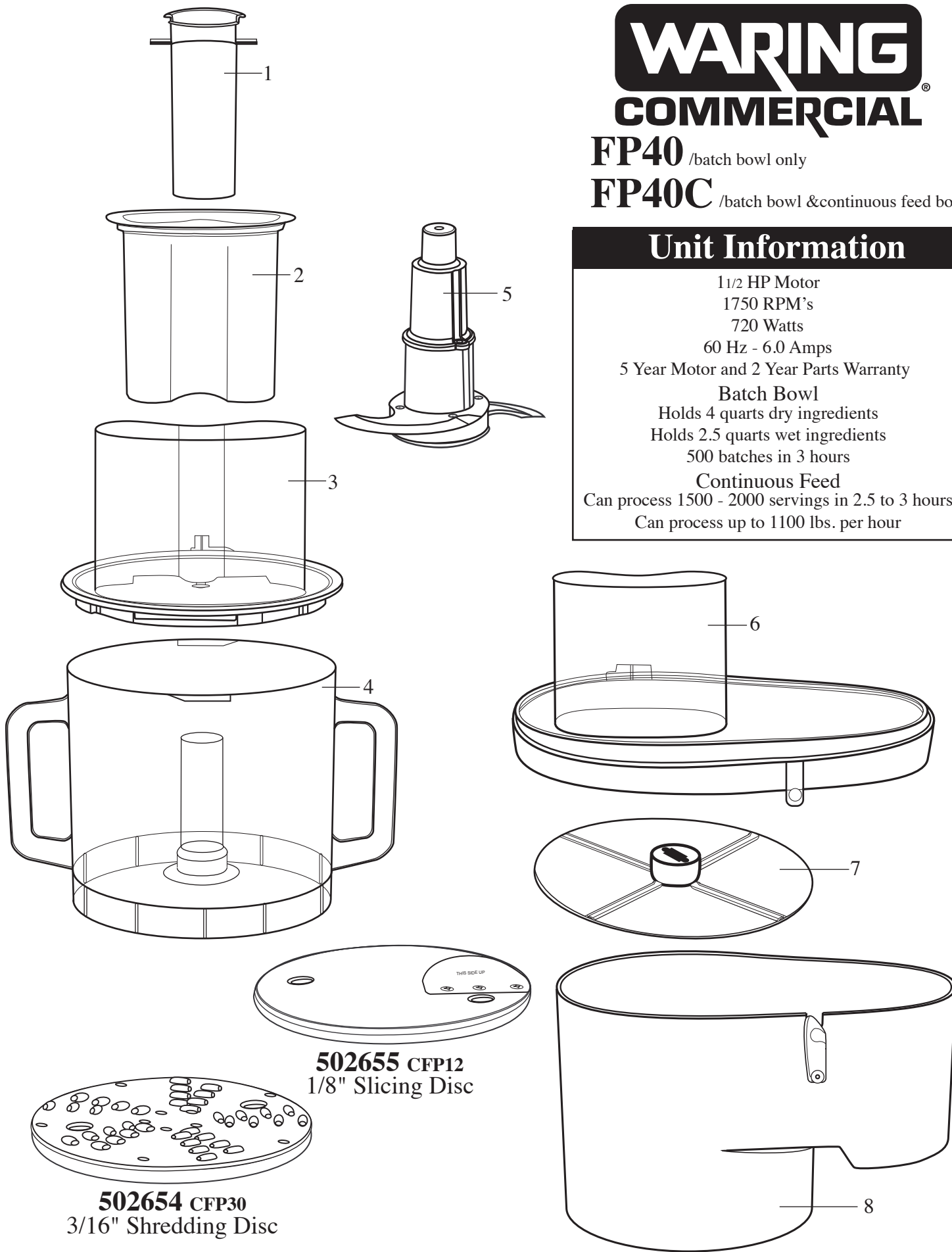
Holds 2.5 quarts wet ingredients

500 batches in 3 hours

Continuous Feed

Can process 1500 - 2000 servings in 2.5 to 3 hours

Can process up to 1100 lbs. per hour



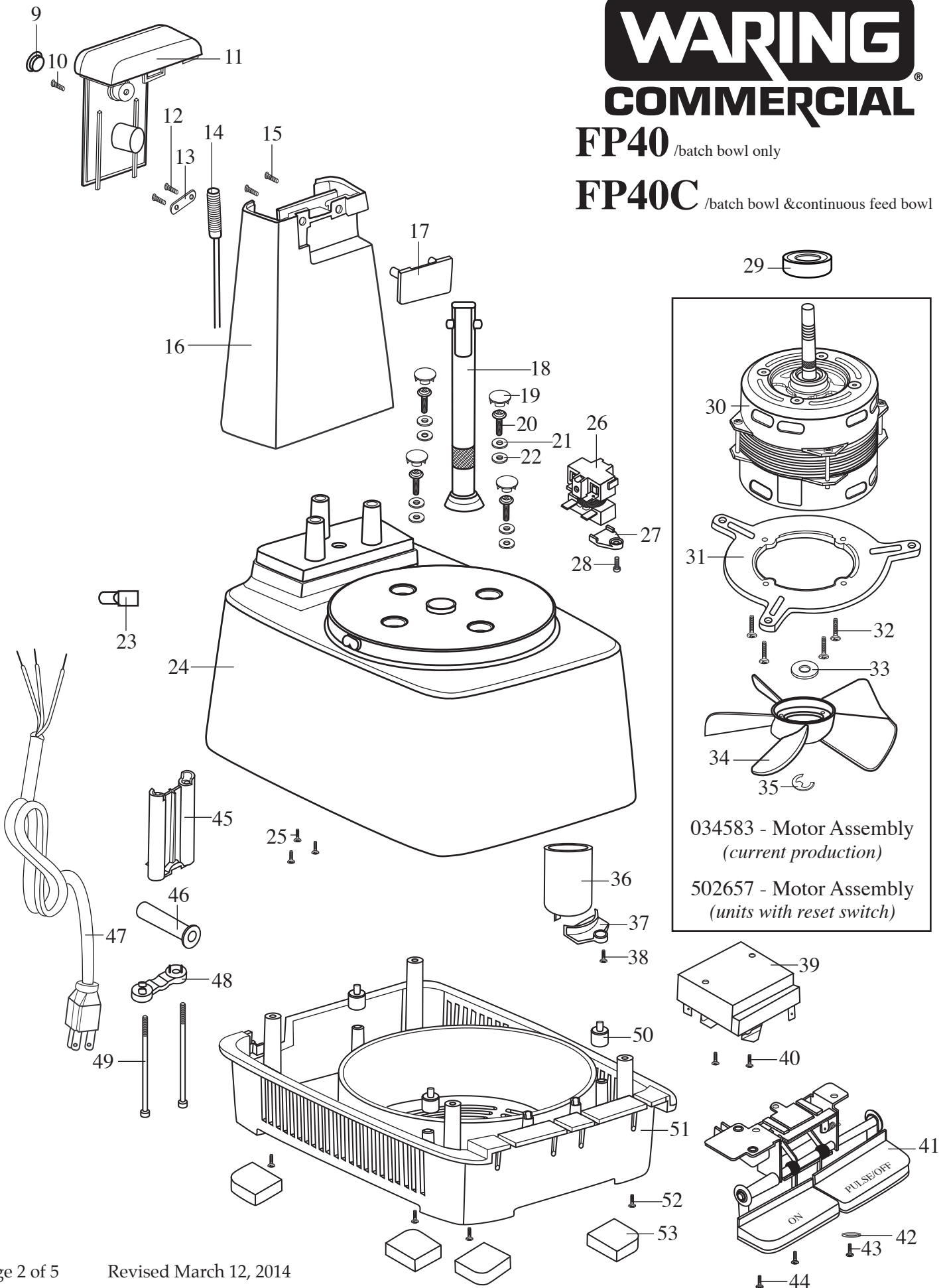
502655 CFP12
1/8" Slicing Disc

502654 CFP30
3/16" Shredding Disc

WARING COMMERCIAL®

FP40 /batch bowl only

FP40C /batch bowl & continuous feed bowl



034583 - Motor Assembly
(current production)

502657 - Motor Assembly
(units with reset switch)

Illustration#	Part#	Description
1	024720	Small Pusher
2	024721	Large Pusher
3	024722	Batch Bowl Cover
4	024723 034577	Batch Bowl Stainless Steel Batch Bowl
5	502653	“S” Blade Assembly
6	024737	Continuous Feed Cover
7	024739	Ejector Plate
8	024740	Continuous Feed Bowl
9	024741	Screw Plug
10	024742	Screw
11	034584 024743	Tower Cover (<i>current production</i>) Tower Cover (units with reset switch)
12	024746	Screw (2 required)
13	024747	Retainer
14	024749	Magnetic Sensor
15	024750	Screw (2 required)
16	024751	Tower
17	024752	Cover Latch Plate
18	502656	Motor Sheath Assembly
19	024755	Screw Plug (4 required)
20	024756	Screw (4 required)
21	024757	Washer (4 required)
22	024759	Fiber Washer (4 required)
23	024789 012409	Large Crimp Connector (2 required) Small Crimp Connector (6 required)
24	024761	Upper Housing
25	024762	Screw (3 required)
26	024763	Relay

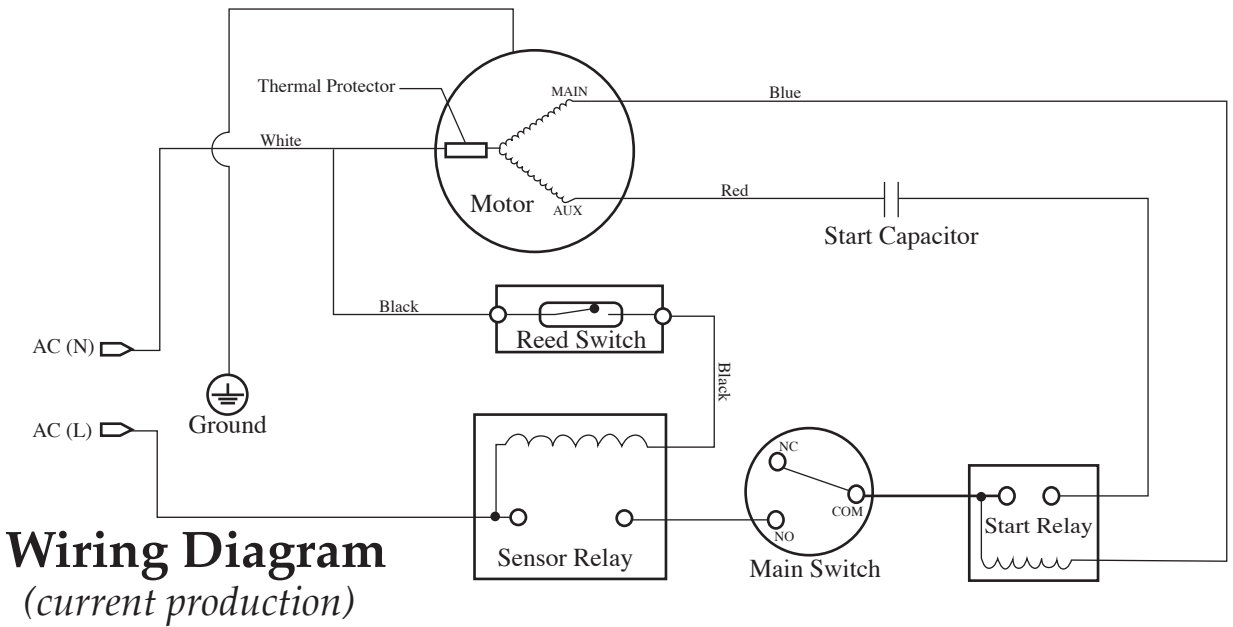
Model/Catalog

FP40


FP40C



Illustration#	Part#	Description
27	024764	Relay Plate
28	024765	Screw
29	024766	Oil Seal
30	034583 502657	MTP Motor Motor (units with reset switch)
31	024768	Motor Support
32	024769	Screw (4 required)
33	024770	Washer /metal
34	024771	Fan
35	024772	E-Ring
36	024773	Capacitor
37	024774	Capacitor Plate
38	024765	Screw
39	024775	Sensor Relay
40	024765	Screw (2 required)
41	024778	Switch
42	024779	Ground Wire Washer
43	024762	Ground Wire Screw
44	024765	Screw (2 required)
45	024780	Cord Support Clamp
46	024781	Cord Bushing
47	024782	Cord
48	024783	Cord Clamp
49	024784	Screw (2 required)
50	024785	Motor Pad (3 required)
51	024786	Lower Housing
52	024762	Screw (4 required)
53	024788	Foot (4 required)



Parts No Longer Used

- 024744 - Nut 
- 024745 - Reset Switch 