

NAPKIN DISPENSING SOLUTIONS

FEATURING VENUE®

EFFICIENT. ATTRACTIVE. VERSATILE.



Cost saving solutions — the San Jamar difference.

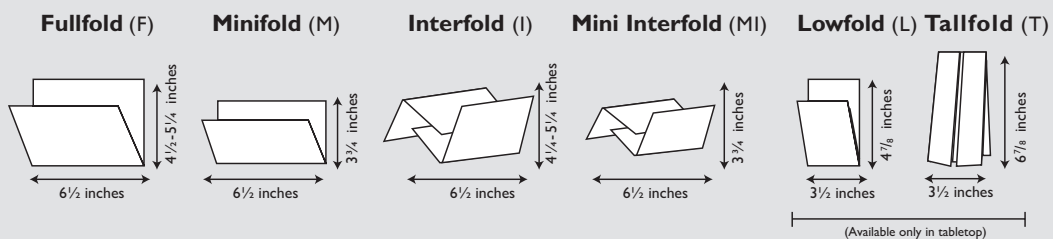
Does your napkin dispenser cost you money? If your dispenser allows customers to grab several napkins at a time, you could be throwing away money.

- Save up to 30% by restricting access to multiple napkins
- Patented control faceplates ensure one-at-a-time dispensing
- Easy access to customers
- Attractive design



Choosing the napkin dispenser that is best for your facility can be a grueling process, we make it as easy as 1-2-3-4.

1 CHOOSE YOUR NAPKIN STYLE...



2 DETERMINE YOUR PLACEMENT AREA...

Tabletop gives each table its own personal napkin dispenser. Customers take only what they need as they need it.

Countertop allows customers easy, community access to napkins. Available in stackable countertop model or with a stand.

Wall mount frees up space on your countertops while giving customers community access to napkins.

In-counter reduces the visual clutter on your countertops while keeping community access to napkins. New design fits into any pre-existing cut-out.

Save money with one-at-a-time dispensing.



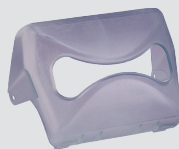
VS



3 CHOOSE YOUR FACEPLATE...



Control Face (CNF) holds napkin styles: FULLFOLD MINIFOLD



Interfold Face (IF) holds napkin style: INTERFOLD MINI INTERFOLD

4 SELECT YOUR COLORS OF CHOICE...

	Venue® Line		Classic Line			
FACE	TBK Black Pearl	CL Clear	TBK Black Pearl	CL Clear	SS Satin Stainless	SC Satin Chrome
BODY	TBK Black Pearl	CL Clear	SS Satin Stainless	XC Chrome	BK Black	X Satin Stainless

Venue® — a savvy business decision.

San Jamar's premier line of napkin dispensers offer exceptionally designed faceplates that reduce napkin waste and saves up to 30% by restricting access to multiple napkins. The Venue® line has it all; good looks, functionality, and saves you money one napkin at a time.

 • NSF listed

Venue® Tabletop Napkin Dispensers

Venue® Tabletop Napkin Dispenser enhances the image of any location, with its high-end appearance and smooth precise dispensing. The compact footprint combined with space for advertising inserts makes a big impression in a small space. Make them readily available on every tabletop so customers can take napkins as they need them—when they need them.

- Patented faceplate reduces napkin usage and saves 30% on napkin waste
- One-at-a-time dispensing of Fullfold, Interfold, Minifold and Mini Interfold napkins
- High capacity, reduces need for frequent refills
- Universal: dispenses any brand or quality of napkin
- Compact, attractive design
- Hygienic and cost effective
- Advertising insert to promote products or events
- Caddy available for full size model to hold and organize your condiments

FITS THE FOLLOWING NAPKIN FOLDS

Fullfold (F)



Minifold (M)



Interfold (IF)



Mini Interfold (MI)





H4005CTBK

H4003TBK

* Specify desired color after item number.
Example: H4000TBK

** For use with compact interfold napkins (4" x 4")

Item	Colors	Napkin/Face	Capacity	Dimensions H x W x D
Venue® Minifold & Mini-Interfold Units				
 H4000*	TBK	M/CNF	200+	6¼" x 7½" x 47⁄8" (159 x 191 x 124 mm)
 H4004*	TBK	MI/IF	200+	6¼" x 7½" x 47⁄8" (159 x 191 x 124 mm)
H4006*	TBK	CI**	200+	6⅜" x 5⅛" x 5¼" (161 x 130 x 132 mm)
Venue® Fullfold & Interfold Units				
H4003*	TBK	I/IF	200+	6¼" x 7½" x 6⅛" (159 x 191 x 156 mm)
H4005*	TBK	F/CNF	200+	6¼" x 7½" x 6⅛" (159 x 191 x 156 mm)
H4005C*	TBK, Dispenser & Caddy	F/CNF	200+	6¼" x 14¼" x 6⅛" (159 x 362 x 156 mm)
H400C*	TBK, Caddy only	NA	N/A	2¾" x 14¼" x 6⅛" (70 x 362 x 156 mm)

Classic Tabletop Napkin Dispensers

This trusted classic design delivers a professional image while providing easy access to napkins at each table. With six models available, including a variety of shapes and sizes, we are sure you'll find the right fit for your facility.

- Durable
- Easy access to napkin for each table
- Two-sided dispensing

FIT THE FOLLOWING NAPKIN FOLDS

Fullfold (F)



Minifold (M)



Lowfold (L)



Tallfold (T)



Item	Colors	Napkin	Capacity	Dimensions H x W x D
22-Gauge Stainless Steel				
H900*	BK, XC	T	150+	7½" x 3¾" x 4" (191 x 95 x 102 mm)
H985*	BK, X	L	150+	5½" x 3¾" x 4" (140 x 95 x 102 mm)
Heavy Gauge Steel				
H4000	XC	M	170+	4½" x 7¾" x 6" (114 x 197 x 152 mm)
H4001XC	XC	F	170+	5¾" x 7¾" x 6" (146 x 197 x 152 mm)
Impact Resistant Plastic				
H950TBK	TBK	CLF	150+	5⅜" x 3⅞" x 5⅞" (142 x 100 x 129 mm)



Venue® Napkin Countertop Dispenser with Stand NSF

Enhance your store image and provide smooth dispensing. The Venue® Stand model brings dispenser off of counter to save space.

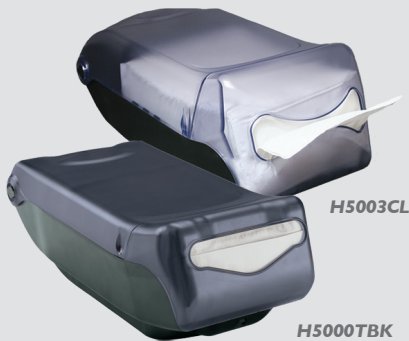
- Patented faceplate reduces napkin usage and saves 30% on napkin waste
- One-at-a-time dispensing of Fullfold and Minifold napkins
- High capacity, reduces need for frequent refills
- Universal: dispenses any brand or quality of napkin
- 50% more capacity than standard countertop dispensers
- Stand model enhances images and saves counter space
- Smooth dispensing down to the last napkin
- Hygienic and cost effective

FITS THE FOLLOWING NAPKIN FOLDS

Fullfold (F) Minifold (M)



Item	Colors	Napkin/Face	Capacity	Dimensions H x W x D
H5000S*	CL, TBK	M/CNF	450+	17¼" x 8" x 13" (438 x 203 x 330 mm)
H5005*	CL, TBK	F/CNF	450+	17½" x 8" x 13" (445 x 203 x 330 mm)



Venue® Countertop Napkin Dispenser NSF

Venue® Countertop Napkin Dispensers enhance the image of any location and are stackable allowing multiple units in a small footprint. Offers smooth one-at-a-time dispensing.

- Patented faceplate reduces napkin usage and saves 30% on napkin waste
- One-at-a-time dispensing of Fullfold, Interfold, Minifold and Mini Interfold napkins
- High capacity, reduces need for frequent refills
- Universal: dispenses any brand or quality of napkin
- Smooth dispensing down to the last napkin
- Stackable design to save counter space
- Hygienic and cost effective

FITS THE FOLLOWING NAPKIN FOLDS

Fullfold (F) Minifold (M)



Interfold (IF) Mini Interfold (MI)



Item	Colors	Napkin/Face	Capacity	Dimensions H x W x D
H5000*	CL, TBK	M/CNF	450+	5⅞" x 8" x 15¾" (149 x 203 x 400 mm)
H5003*	CL, TBK	I/IF	550+	7¼" x 8" x 15¾" (184 x 203 x 400 mm)
H5004*	CL, TBK	MI/IF	550+	5⅞" x 8" x 15¾" (149 x 203 x 400 mm)
H5005*	CL, TBK	F/CNF	450+	7¼" x 8" x 15¾" (184 x 203 x 400 mm)

Classic Countertop Napkin Dispensers

It's a classic addition to any diner, bar, or restaurant. The high-impact plastic base protects against corrosion in humidity or after getting wet.

- Durable
- Patented control face eliminates napkin waste by dispensing one-at-a-time
- Portable to accommodate changing needs
- Smooth dispensing down to the last napkin

FITS THE FOLLOWING NAPKIN FOLDS

Fullfold (F)



Item	Colors	Napkin	Capacity	Dimensions H x W x D
H3001*	XC, BKC, CLBK, CLXC, TBK, TBK	F/CLF	300+	5½" x 7⅝" x 11" (140 x 194 x 279 mm)
H3005*	CLXC	F/CNF	300+	5½" x 7⅝" x 11" (140 x 194 x 279 mm)

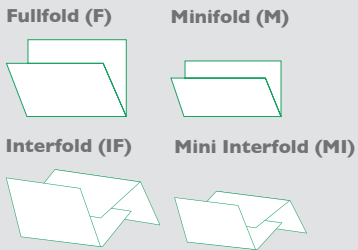
Venue® Wall Mount Napkin Dispenser

Offering a unique design that saves valuable counter space while providing quick and easy access to napkins.

- Patented faceplate reduces napkin usage and saves 30% on napkin waste
- One-at-a-time dispensing of Fullfold, Interfold, Minifold and Mini Interfold napkins
- High capacity, reduces need for frequent refills
- Universal: dispenses any brand or quality of napkin
- Mount to the wall to save valuable counter space
- Hygienic and cost effective
- Smooth dispensing down to the last napkin



FITS THE FOLLOWING NAPKIN FOLDS



Item	Colors	Napkin/Face	Capacity	Dimensions H x W x D
H5000P*	CL,TBK	M/CNF	500+	15¾" x 8" x 5 ⁹ / ₁₀ " (400 x 203 x 150 mm)
H5003P*	CL,TBK	I/IF	500+	15¾" x 8" x 7¼" (400 x 203 x 184 mm)
H5004P*	CL,TBK	MI/IF	500+	15¾" x 8" x 5 ⁹ / ₁₀ " (400 x 203 x 150 mm)
H5005P*	CL,TBK	F/CNF	500+	15¾" x 8" x 7¼" (400 x 203 x 184 mm)

Venue® In-Counter Napkin Dispenser

Introducing the most versatile in-counter napkin dispenser in the market. Patented faceplates provide customers with one-at-a-time dispensing of napkins, reducing napkin waste and saving up to 30%. Designed to be retrofitted into existing napkin cutouts or for new installation.

- Dispenses napkin one-at-a-time to eliminate waste and save money
- Universal: Dispenses any brand or quality of napkin
- Dispenses Fullfold or Interfold napkin
- NSF certified
- High capacity
- Durable, break resistant plastic
- Easy to clean, open and load

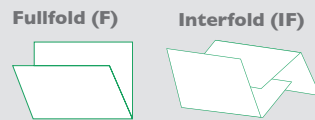



Adapter used to retrofit into current counter cutouts (H200ADT)



Visit sanjamar.com for installation video.

FITS THE FOLLOWING NAPKIN FOLDS



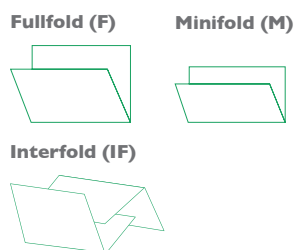
Item	Colors	Napkin/Face	Capacity	Dimensions H x W x D
H2005*	CLBK CLSC	F/CNF	750+	8 ¹³ / ₁₆ " x 7 ¹ / ₄ " x 20" (224 x 184 x 508 mm)
H2003*	CLBK CLSC	I/IF	750+	8 ¹³ / ₁₆ " x 7 ¹ / ₄ " x 20 ¹ / ₄ " (224 x 184 x 514 mm)
 H2005SC	SC	F/CNF	750+	8 ¹³ / ₁₆ " x 7 ¹ / ₄ " x 20" (224 x 184 x 508 mm)

Classic In-Counter Napkin Dispensers

In-counter Napkin Dispensers offer a unique, space-saving design. The large capacity, stainless steel storage box is hidden under countertops for a neat, professional appearance.

- High capacity in a compact design

FITS THE FOLLOWING NAPKIN FOLDS



Item	Colors	Napkin/Face	Capacity	Dimensions H x W x D
H2000*	XC, SS, SC	M/CNF	750+	19 ⁵ / ₈ " x 7" x 5 ¹ / ₂ " (498 x 178 x 140 mm)
H2001*	XC, SS, CLSS, SC	F/CLF	750+	19 ⁵ / ₈ " x 7" x 5 ¹ / ₂ " (498 x 178 x 140 mm)
H2005*	CLSS	F/CNF	750+	19 ⁵ / ₈ " x 7" x 5 ¹ / ₂ " (498 x 178 x 140 mm)
H2003*	CLSS	I/IF	750+	19 ⁵ / ₈ " x 7" x 5 ¹ / ₂ " (498 x 178 x 140 mm)



San Jamar

555 Koopman Lane
Elkhorn, Wisconsin 53121
USA
T: +1.262.723.6133
F: +1.262.723.4204
info@sanjamar.com
www.sanjamar.com

Canada

15252 32nd Avenue
Suite 309
Surrey, BC V3S 0R7
CANADA
T: +1.262.723.6133
F: +1.262.723.4204
canada@sanjamar.com

Europe

Schoorstraat 26a, bus 1
2220 Heist op-den Berg
BELGIUM
T: +32 15 22 81 40
F: +32 15 22 81 48
emea@sanjamar.com

México

Av. Universidad #1377-701
Colonia Axotla CP 01030
Del. Alvaro Obregón
MEXICO, D.F.
T: +52 (55) 3626 0772
F: +52 (55) 5273 4495
mexico@sanjamar.com

www.sanjamar.com

